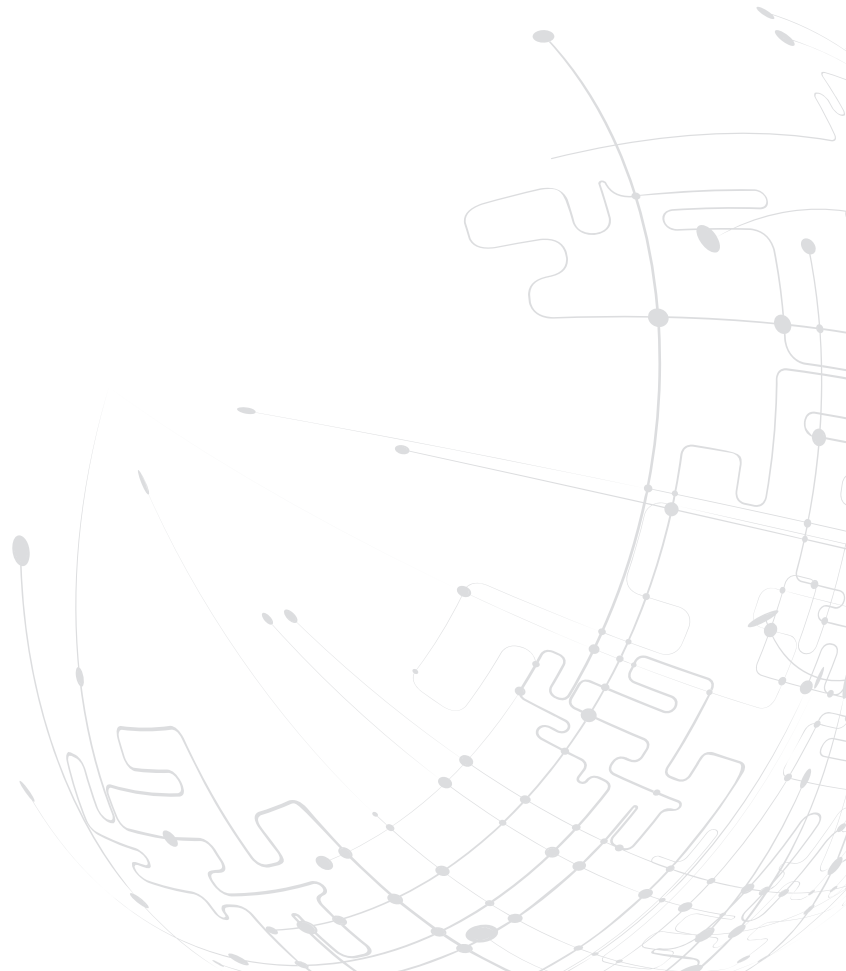




## 4. ISOBUS – Implement Control





## 4.1. Variotronic implement control (ISOBUS)

Fendt 300 / 500 / 700 / 800 / 900 / 1000 Vario  
Fendt 900 Vario MT



### Product description

ISOBUS is a manufacturer-independent standard for connecting the tractor terminal and implement. This is standardized as ISO 11783. The connection of the (tractor) terminal and implement takes place by a single plug. ISOBUS is supported by both the Varioterminal 7" and Varioterminal 10.4".

#### ISOBUS comes with the following features:

- UT: stands for Universal Terminal, which renders the terminal display
- TECU: serves as the job computer for tractors to support the data transfer between tractor and implement
- AUX-N and AUX-O: are used for joystick operation.
- TC-BAS: is used for the overall data recording of an order.
- TC-GEO: permits the collection of location-specific data and the scheduling of orders, for example by means of application maps.
- TC-SC: is used for the automatic switching of 36 or more sections based on SectionControl



#### Availability ISOBUS at Fendt Vario tractors:

Series	Power	PowerPlus	Profi	ProfiPlus
Fendt 1000 Vario S4		✓	✓	✓
Fendt 900 Vario S4	○	✓	✓	✓
Fendt 800 Vario S4	○	✓	✓	✓
Fendt 700 Vario S4	✗	✓	✓	✓
Fendt 500 Vario S4	✗	✓	○	✓
Fendt 300 Vario S4	✗		○	✓
Fendt 200 Vario S3				

- ✓ standard
- optional
- ✗ ISOBUS-option is not available
- model range is not available

### Customer benefits

- Operation of all ISOBUS devices by way of a single terminal
- Simple and intuitive controls
- Comprehensive presentation of the ISOBUS devices in half-frame or full screen mode
- The Fendt multi-function joystick is fully ISOBUS capable
  - Handover of operation to the multi-function joystick
  - The standard version supports 10-key operation
- A range of implements are compatible with Varioterminal; for more information see: <https://www.aef-online.org/de/produkte/aef-isobus-datenbank.html>

### Further information

<https://www.fendt.com/int/15603.html>

[https://www.fendt.tv/en/home/one-terminal-for-everything-100-isobus-compatible\\_1698.aspx](https://www.fendt.tv/en/home/one-terminal-for-everything-100-isobus-compatible_1698.aspx)



## 4.2. Variotronic TIM ready

**Fendt 700 / 800 Vario ProfiPlus (optional)**

### Product description

The Tractor Device Management System (TIM) permits an implement to control certain tractor functions automatically. At present, this ISOBUS standard is still in final development, and must then pass the "ISOBUS conformity test" by AEF.

The Fendt 700 and 800 Vario ProfiPlus tractor series can already be equipped with this TIM ready functionality. This means that a TIM-enabled implement automatically controls certain functions of the tractor.

This includes for example the forward speed and a hydraulic valve on a TIM-enabled baler. Thanks to this functionality, the efficiency of your full combination can be greatly enhanced, and the operating process optimised.

### Customer benefits

- The implement optimizes its own performance
- Efficiency of the entire combination is significantly increased
- Improved work quality
- Relief of driver workload

### Further information

<https://www.fendt.com/int/15603.html>