

# FENDT

## Fendt X- / P-Serie







Fendt	kW	PS
8380 P	279	379
8380 P AL	279	379
8410 P	297	404
8410 P AL	297	404
9490 X	365*	496*
9490 X AL	365*	496*

\* Maximum power including boost

## Technology for the future challenges in agriculture.

The combines in the new Fendt X-Series and P-Series offer a selection of high-performance combines for farms that require power, reliability and the highest level of technology. The new models are tailored precisely to the needs of large-scale agricultural farms and contractors, where the focus is on operating costs and machine efficiency.



## SKYLINE CAB

# My home for long work days.

### The work place

The Fendt Skyline cab offers plenty of space and room for your well-being. Through the innovative design of the combine, visibility to the most important areas, such as the unloading auger, stubble and table is optimal. There is also excellent visibility towards the rear using the electrically adjustable, heated mirrors or the standard specification reversing camera in the Varioterminal 10.4".

### Best comfort for relaxed working conditions

The Fendt combines are equipped with the latest generation of comfort seats. Air suspension is standard and there are many setting options that enable optimum adjustment to meet personal needs. The three-way adjustable steering column makes it easy to find a relaxed working position. A roomy storage and cooling compartment are located under the generously sized passenger seat.

### Powerful work lights for night work

The lighting concept on the Fendt X-Series and P-Series offers bright and far-reaching illumination in the field and on the road. The standard equipment includes a comprehensive set of adjustable work lights, which provide excellent illumination for night work. Furthermore, the combines have service lighting under the side flaps as well as stubble and row lights as standard specification.

### Work in peace and quiet

The Skyline cab spoils your ears with a very low noise level, so that you can concentrate on your work, even after many long hours. This is guaranteed through the use of the latest laminated glass technology for the windscreen.

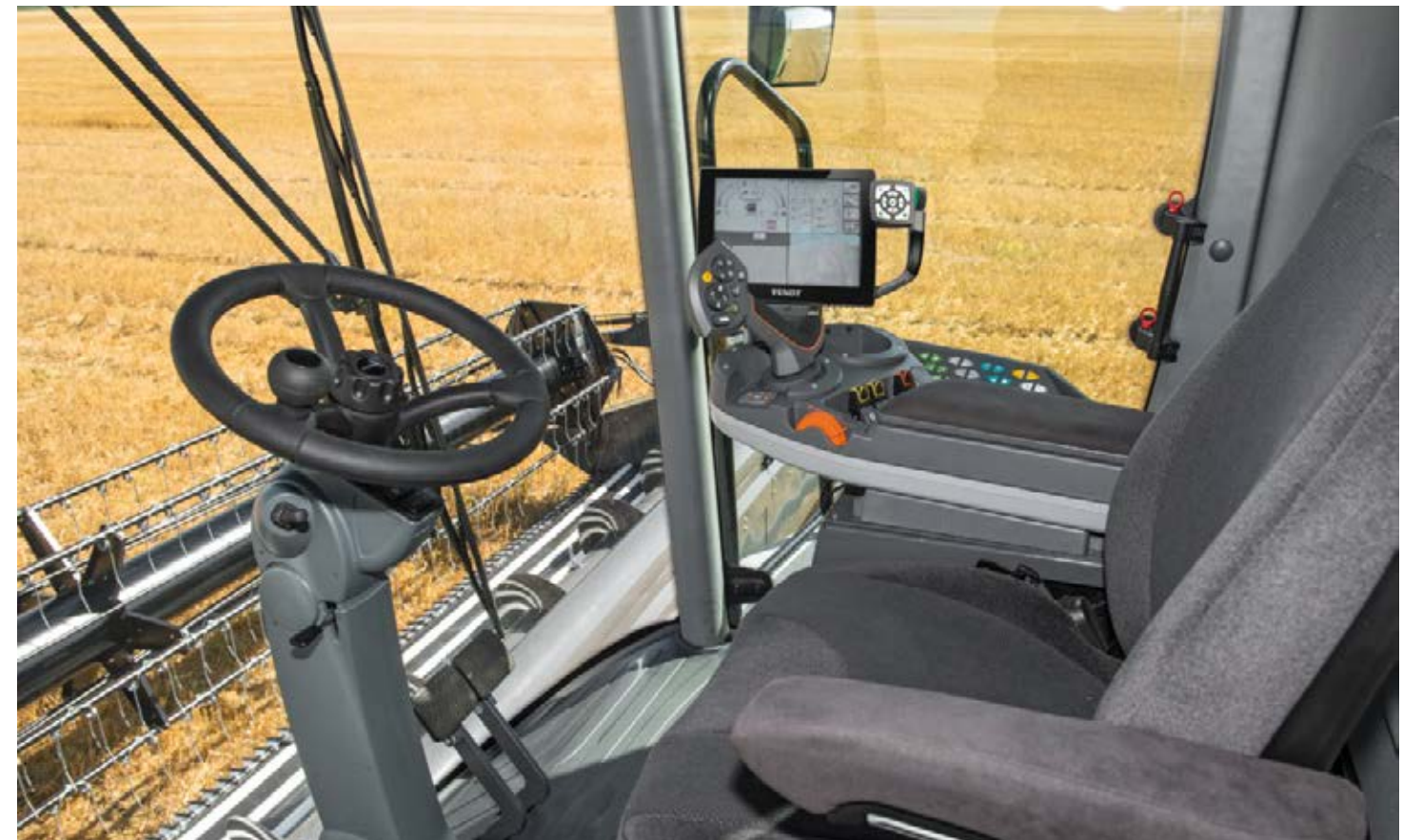
The two-part wide-angle mirror provides an excellent view to the sides of the machine.



Best visibility to the crop elevator enables fast mounting/removing of the table.



Direct view to the unloading auger.



Automatic climate control is standard and ensures a pleasant climate in the cab, even on hot days.



Optional multimedia system with CD/DVD/USB, Navigation and Bluetooth.



Clear overview of activated work lights in light operating panel.



FENDT VARIOTRONIC

Straightforward and clear operating elements make work easy.

Fendt Variotronic

Like in the Fendt tractors, the clearly designed Fendt armrest is the most important operating unit. The Varioterminal 10.4" offers the perfect view of all key data. All key machine settings can be adjusted conveniently here at the push of a button.

Fendt multi-function joystick

The central control element for your Fendt combine lies securely in your hand. The Fendt multi-function joystick is located in the front part of the Variotronic armrest and contains all the buttons required for controlling all of the most important areas of the machine for the harvest. The armrest can be adjusted in height and length, so that you can find the ideal sitting position. The soft surface of the armrest provides maximum comfort.

Functional membrane keypad

The membrane keypad, which is part of the Variotronic armrest, contains the operating elements that are not used regularly. Here additional machine settings can be made quickly and easily.

- 1 Table control position
- 2 Header stop
- 3 Reel position
- 4 VarioGuide activation
- 5 Automatic cutting height control
- 6 Grain tank unloading on/off
- 7 Extend/draw in the unloading auger
- 8 Reel speed

- 1 Threshing cylinder speed
- 2 Threshing basket wire spacing  
Separation rotor speed (only X-Series)
- 3 Fan speed
- 4 Top sieve opening/bottom sieve opening
- 5 Straw chopper spreading pattern
- 6 Grain tank open/closed Grain tank discharge speed
- 7 Oilseed rape cutter on/off
- 8 Transport mode/VarioGuide Standby

- 1 Engine speed
- 2 Threshing unit on/off
- 3 Table on/off
- 4 4-wheel drive on/off
- 5 Handbrake on/off



AGCO's all-encompassing new electronics strategy Fuse Technologies™ provides seamless integration and networking of the entire fleet for farmers and contractors. Under the name Fuse Technologies, AGCO and Fendt provide solutions for precision farming, which reduce operating costs and make machine operations even more efficient and profitable.



FENDT VARIOTRONIC

## Your intelligent assistant.

### Fendt Varioterminal 10.4"

With the Varioterminal 10.4", Fendt also sets the standards for optimum menu navigation and across-range operating interface in harvesting machinery. The Varioterminal 10.4" is located in perfect view and well within reach. It provides all relevant performance data and settings of your Fendt combine. With the touch-screen monitor, you can check and adjust machine settings quickly and easily.

### All in one terminal

With the Varioterminal 10.4", Fendt puts all functions together in one terminal. Whether you are adjusting machine settings, using the automated steering system or documenting operation, all these applications are integrated in the Varioterminal 10.4".

### Everything in view

The large Varioterminal 10.4" with colour display has intuitive menus and can display up to four different applications, so you have an overview over everything at all times. You can select the screen layout flexibly as you wish and, with up to two integrated cameras, you have an expanded view into additional areas, for example, when reversing of unloading.

### Automatic machine settings

The Varioterminal 10.4" allows you to save as many of your own machine settings as you like for all the main types of crops. One click on the saved setting and the machine automatically adopts the settings and then, for example, accordingly adjusts the threshing cylinder speed or concave setting.



The main information page, above left, shows the engine speed and travel speed. Next to it are the displays for fuel, AdBlue, oil and engine temperature. The graphic shows the current status of the grain tank unloader system and the combine's unloading auger.

The current and preset cutting height, straw walker/separation rotors and sieve grain loss as well as the returns volume are shown in the main menu. Below them are the short cut keys for the machine settings.

Info plus menus can be shown in the lower area of the Varioterminal 10.4". Here you can choose between submenus, which deliver further information on the various areas of the machine. VarioDoc and VarioGuide can be displayed in this area.

A newly developed 360° camera system offering a better overview and increased reliability. Four ultra-wide angle cameras, fitted to all four sides, combine their digital images into a single image on the Varioterminal 10.4". This gives you a bird's eye view of the machine at all times.

## INTEGRATED INFORMATION AND AUTOMATIC STEERING SYSTEMS

# VarioGuide: The cornerstone of valuable data.

### VarioGuide – always on track

The optional VarioGuide uses the latest technologies to guide your machine precisely through the crops. This gives you higher threshing performance by reducing unnecessary passes and optimising the field division. The integrated system is adjusted in the Varioterminal 10.4" with just a few clicks. Various upgrade stages offer accuracy in the standard range +/- 20 cm, in the precision range of +/- 5 cm and in the RTK range with +/- 2 cm. VarioGuide allows operators to get the best out of their machines.

### VarioDoc Pro – perfect documentation

The VarioDoc system runs in the background of the Varioterminal 10.4". It logs machine information, such as threshed area, fuel consumption and working time, which is then transferred to the field database either via Bluetooth or GPRS. In connection with a GPS signal and the data from the yield mapping, the Fendt VarioDoc system gives you the opportunity to create yield maps with your field database. This system already offers you the future requirements for documentation now and

at the same time provides valuable information on the profitability and efficiency of your combine operations. With your Fendt combine, you can close the gaps in the documentation of threshing operations. The data can be used by a number of field databases through the open interface. Use the system for accurate and efficient documentation of your work, or for detailed billing when hiring threshing services, or for a profitability analysis of your jobs.

### AgCommand™ telemetry system

Our X-Series and P-Series combines can be fitted with the AgCommand™ telemetry system. This intelligent solution always informs you about where your machines are located and where they were in operation. This allows you to manage your entire fleet perfectly and optimise all your operations.



The settings for the VarioGuide automatic steering system can be easily adjusted in the Varioterminal 10.4".



Fully integrated in the Varioterminal 10.4". Operators can edit previously uploaded jobs and/or create new jobs.



TABLE

# The new benchmark: 10.70 metre PowerFlow.

**PowerFlow table**

The PowerFlow table has been known for maximum productivity for more than 35 years. The big clearance between the cutterbar and the auger makes cutting in high crops easier. Then the PowerFlow belts transport the crop directly under the intake auger. This guarantees uniform ears-first feed of the material in all crops and under all harvesting conditions and therefore higher threshing capacity and throughput.

**44% bigger working area**

The new SuperFlow intake auger on the 10.70 m and 9.20 m PowerFlow table conveys large quantities of crop. The large 762 mm-diameter is the largest currently available on the market and enables a working area of 179.5 mm. It is therefore 44 percent larger than the current nearest competitor. Even during oilseed rape harvests, the intake auger guarantees throughput with having to fit another oilseed rape auger. The two-sided Schumacher knife drive on the 10.70 m PowerFlow table guarantees maximum reliability and provides a convincing, uniformly high cutting speed.

**Additional features**

Electrically driven side knives are available for harvesting oilseed rape. These are simply mounted on the side of the table, and then harvesting can begin. No other parts need to be attached or used. An additional rape auger is available for table widths from 6.80 m to 7.70 m, so you do not need to make any compromises regarding output when harvesting oilseed rape.

**Automatic table guidance**

The automatic table guidance on the Fendt combines offers two options for setting the cutting width. The cutting height preselection feature controls the cutting height from 0-50 cm through a sensor on the crop elevator. The cutting height automatic, which determines the cutting height through skid shoes on the table, is used to control the cutting height from 0-20 cm in low crops. Two additional systems ensure that the table is guided cleanly over the ground. In laid grain, the field pressure control keeps the table floating directly above the ground without ever lowering it into the ground. The AutoLevel function is responsible for keeping the table level in the side-to-side direction.

The standard multi-coupler permits fast turnarounds when changing fields.



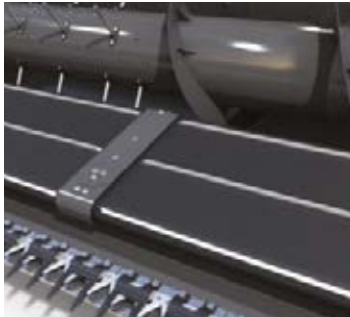
The Schumacher cutterbar is the best in the industry. With 1,220 cuts per minute, it always ensures a clean cut. The knives are arranged alternately, so the cutterbar is self-cleaning and always remains sharp.



The optional rapeseed auger increases the crop flow to the crop elevator in high crops and enables an increased throughput rate. Two side knives complete the equipment for oilseed rape harvesting.



The cutterbar is positioned 1.14 metres in front of the intake auger, which ensures perfect visibility and maximum performance. The robust PowerFlow belts transport the crop to the intake auger at a steady speed. Furthermore, the belts deflect stones.



The Schumacher cutterbar enables a uniform, high cutting speed for maximum performance over a 10.70-metre width. In this cutting width, the two-sided knife drive guarantees maximum reliability in comparison to cutterbars that are driven on only one side.



The SuperFlow high-performance intake auger with feed fingers over the entire width of the table, enables safe and gentle intake of all kinds of crops. Fast and easy adjustment of the intake auger allows operators to find the optimum setting for the best crop flow.



The high rear wall of the table increases stability and keeps the crop in the table.



FENDT CORNFLOW™

## Grain maize perfectly under control.

### High performance, compact size

Fendt CornFlow™ headers are available with six or eight rows. The row spacing is either 70 or 75 cm. These maize headers are rigid or folding, and even the eight-row model remains within the 3.5 m transport width when folded as the special folding mechanism folds the header very compactly both vertically and horizontally. The driver therefore has excellent visibility to the front. All functions are conveniently operated with the multifunction lever.

### Variable settings

The counter-rotating header rollers, each with four knife blades, are robust and durable. The deck plates can be adjusted on both sides so that the crop always flows centrally through the picking unit. This guarantees a reliable intake.

### Optimum accessibility, better protection

To further protect the maize cobs, and therefore achieve perfect grain quality, the hoods and points are manufactured from flexible plastic. They fold easily, allowing rapid access to the picking rollers. They are also fitted with replaceable wear plates in the areas which experience the highest loads. The lateral bearing chains on the CornFlow™ are part of the standard specification and their speed can be adjusted with ease using the Fendt multifunction lever. The horizontal chopper, which is fitted with two chopper blades, is optional and can be added or removed as required.

Of course, as a genuine Fendt product, the well-known, comprehensive Fendt service and guarantee apply to CornFlow™ attachments



Very easy accessibility to all relevant points is a feature of the Fendt CornFlow™ headers, and therefore makes cleaning and maintenance easier during lengthy harvest periods.





THRESHING AND SEPARATING WITH THE FENDT P-SERIES

Threshing with walker separation.

600 mm wide high-inertia threshing drum

The Fendt threshing cylinder has reinforced threshing bars, which increase the weight on the outside of the drum and thus generate a flywheel effect. This physical effect ensures a uniform drum speed, even when the threshing load varies, which enables a higher throughput and greater productivity. The constant threshing cylinder speed produces clean threshing results and the cleanest grain sample.

High-capacity concave

To fulfil the demands for higher machine output, the Fendt concave has a sturdy pre-concave extension, which starts the threshing process. The separating process therefore starts immediately, as soon as the crop reaches the concave. The concave can be opened up to 40 mm to permit larger quantities of crop material to be processed. In particular, the wide concave opening makes harvesting of oilseed rape much easier and produces the best sample. When harvesting wheat, this prevents overly intensive threshing and increases grain separation.

Intensive separation

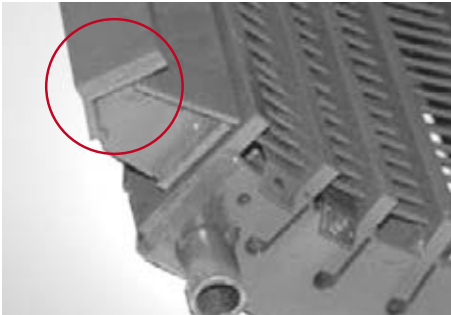
The concave has varying wire spacing. The threshing process is optimised in the front area with narrower wire spacings, while separation is maximised in the rear area of the concave through wider wire spacings. Much more material is separated in the threshing unit, which reduces the load on the straw walkers.

Rotary separator

The rotary screen, whose speed and clearance to the concave can be adjusted, enhances separation performance.

The large threshing cylinder is fitted with additional weight bars, which give it very high inertia. The result is uniform threshing of the crop.

Threshing already starts at the pre-concave threshing bar. The rugged concave has gentle threshing action in the front area and high separation capacity at the rear thanks to the different wire spacings. For effective separation of residual grain, the crop is diverted from the beater to the rotary separator.



The rotary separator – the third element in the threshing unit – plays a significant role in increasing output, especially under difficult harvesting conditions, such as with green or damp straw.

High steps and a long walker stroke ensure that the straw mat is fluffed up and moved effectively. This process is extremely effective through the eight-straw walker design, which increases the performance of the machine.



THRESHING AND SEPARATING WITH THE FENDT X-SERIES

Threshing with rotor separation.

**HyPerforma threshing unit for better performance**  
The Fendt X-Series uses the proven threshing cylinder from the straw-walker machines. The higher output of the hybrid combine in comparison to the straw-walker system arises through the higher separation capacity of the rotors and the higher engine power.

**Optimum feed to the rotors**  
The RotorFeeder is the third cylinder in the threshing unit and guides the crop flow gently and uniformly into the two separation rotors. The large diameter and constant speed of the RotorFeeder generates a centrifugal force, which separates the grain from the straw through the attached concaves. Furthermore, this centrifugal force separates the harvested crop into two crop flows with little effort and then guides these to the rotors.

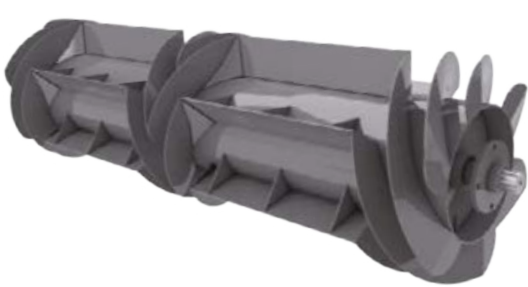
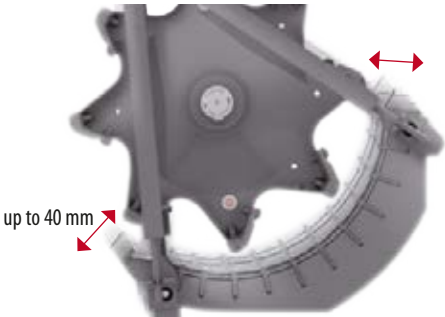
**Intelligent design of separation rotors**  
The reciprocating separation rotors with the spirally arranged fingers actively pull the crop in and, through the centrifugal force that is generated, press it outwards against the concaves. This separates out the grain. This constant high separation capacity enables clearly higher harvesting output in comparison to straw-walker and rotary combines alone. Moreover, the active crop flow prevents blockages.

**Maximum grain separation**  
Specially developed rotor fingers are attached along the separation rotors in a spiral formation and support crop transport. The fingers are angled to prevent the precious straw from being damaged, while still enabling a high separation capacity. The concaves below the rotors enable maximum separation capacity for a gentle crop flow and the best straw quality.

The large threshing cylinder is fitted with additional weight bars, which give it very high inertia. The result is uniform threshing of the crop.



The pre-concave extension gently starts the threshing process and increases the efficiency of the concave. The distance between the concave and cylinder has been increased to match the massive throughput capacity of the machine. It can be set to 40 mm to permit fast and efficient crop flow through the threshing unit.



The RotorFeeder splits the crop material in two uniform sections and guides them to the separation rotors. Large intake openings permit large quantities of crop material to enter the separation rotors. The smooth crop flow guarantees decisive benefits in fuel consumption as well as straw quality.



The concaves have a large separation area of up to 3.54 m<sup>2</sup> and have a finger-shaped grating design, which enables optimal separation and gentle handling of the straw and grain.



## CONSTANT FLOW

# More than 15% increase in output with Constant Flow.



### High output available at all times

The key to high machine performance is that the threshing unit is always completely and uniformly filled. If the crop becomes thinner, the machine needs more crop to utilise the full performance. The machine automatically increases the working speed to maintain the output constantly at its maximum.

### Simple operation

Fendt Constant Flow is easily activated with the multifunction joystick. Two sensors in the drive for the threshing unit continually monitor the load on the unit. Constant Flow enables perfect utilisation of the threshing unit through the automatic adjustment of harvesting speed relative to the quantity of crop in the threshing unit.

### Up to 15% increase in output

The uniformly high crop feed into the threshing unit increases the threshing and separation capacity and reduces grain loss. Constant flow optimises productivity, especially when crops change. Up to 15% more output can be achieved in a number of different crops while lowering the losses. Operators do not need to work at keeping the machine in the optimum output range, but can concentrate on other tasks.



Constant Flow automatically controls the ground speed of Fendt combines dependent on the crop density.



OPTIMAL CLEANING – STRAW MANAGEMENT

# Equipment that enables maximum output.

**Perfect cleaning through smart aerodynamics**

The unique Venturi cleaning system delivers maximum cleaning capacity, to achieve a perfect grain sample and minimum losses. The system creates optimised air flow over the entire sieve area. The aerodynamically-formed Venturi air inlet opening, which is found in the centre of the blower housing, increases the volume of air.

**The cleanest sample**

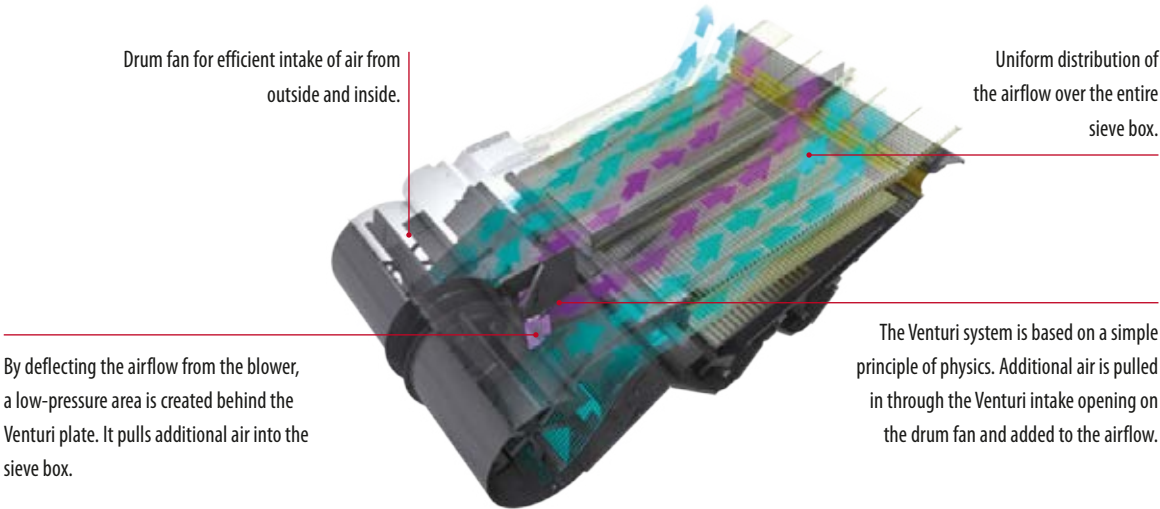
The cleaning system is able to deal with large quantities of grain-chaff material from the threshing unit and the separating system. Grain is separated cleanly and efficiently from chaff and dust. You harvest the best quality grain.

**You have the choice**

Whether the material is chopped or swathed, Fendt combines deliver excellent results. Gentle handling of the straw during the threshing and separating processes guarantees exceptional straw quality. The 8-row high-capacity chopper, which has 108 knives, chops the straw thoroughly and spreads it uniformly. The optional Maxi Spread radial spreader is ideally suited for large working widths (only X series).

**Good and short**

The straw is chopped very short, which ensures fast decomposition – crucial for conservation tillage or direct seeding. To maximise straw chopping, the chopper floor can also be adjusted.



For the 9.20 m and 10.70 m wide tables, you can equip your Fendt machine with the optional Maxi Spread radial spreader (only X-Series). The two discs ensure uniform spreading of the chopped material over the entire working width. The speed of the discs and therefore the working width can be easily adjusted independent of each other from inside the cab.

The high-performance straw chopper has 8 rows with a total of 108 serrated blades and has a considerably higher working speed than standard straw choppers.



The electrically adjustable sieves can be adjusted directly in the Varioterminal 10.4" inside the cab. Furthermore, they are adapted to the previously saved settings by the automatic machine settings.



The hydraulically driven chaff spreader folds back easily by means of a gas pressure cylinder to provide access to the shaker shoe.



The patented returns system comprises an auger and a paddle wheel, which transport the material to the preparation floor and guarantee effective rethreshing. The returns volume is monitored continually and displayed in the Varioterminal 10.4".



PERFECT QUALITY OF GRAIN

Your grain in good hands.



Grain tank capacity in litres		
Combine harvesters	Standard	AutoLevel
8380 P	10,500	10,500
8410 P	12,500	10,500
9490 X	12,500	10,500

**12,500 litre capacity**  
The grain tank capacities are adapted to the high machine output and have a capacity of up to 12,500 litres. That guarantees high efficiency, longer threshing times and therefore more time for harvesting. The central filling auger fills the tank evenly and completely. Two filling level indicators always inform operators about the fill level of the grain tank. The auger is retracted and the electric covers seal tight when closing the grain tank.

**Fast and complete unloading**  
The crop is unloaded quickly with 120 l/sec unloading capacity. To prevent driving over the swath when unloading, different reach lengths are offered for the unloading auger.

ATRAK CRAWLER TRACK

Your choice for the best soil protection.



Tyre size	Outer width P-Series – X-Series	
	Standard machine	AutoLevel machine
1050 / 50 R 32	4.23 m	
900 / 60 R 32	3.9 m	3.9 m
800 / 70 R 32	3.82 m	
800 / 65 R 32 CerexBib	3.82 m	3.82 m
800 / 65 R 32	3.86 m	3.86 m
710 / 75 R 34	3.49 m	3.49 m
680 / 85 R 32 CerexBib	3.49 m	
Atrak crawler track 25"	3.49 m	

**Track with 3.49 m outer width**  
Fendt offers the Fendt ATRAK system for harvesting conditions where crawler tracks are required. Positive power transmission, automatic track tensioning and low soil compaction, especially in wet conditions, are only a few advantages of this system. The four sprung crawler tracks provide a huge contact area, which minimises pressure on the soil. Furthermore, the machine moves more smoothly at higher speeds thanks to the track; this

ensures higher ride comfort and precise table guidance. Decisive, however, is the 3.49-m maximum outer width of the Fendt combine with 635 mm wide tracks.

Furthermore, Fendt offers a number of different tyres for the machines in the X-Series and P-Series. The Ultraflex tyre technology, in particular, creates a large contact area with low tyre pressures. That significantly lowers the risk of soil compaction.



Integrated final drives – specially developed for high loads.

Progressive, integral block suspension – simple but effective, for high ride comfort.

4 middle wheels ensure a giant contact area with a high load bearing capability.



AUTOLEVEL RUMP LEVELLING SYSTEM

Guaranteed high performance on slopes.



**Complete side-to-side levelling for maximum output in hilly terrain**  
With AutoLevel control, the combine can work at full output capacity on slopes up to 12 percent. The combine body remains level so that the crop is distributed uniformly in the threshing, separating and cleaning systems. This permits maximum productivity and efficiency in hilly regions.

**Easy and proven**  
All models of the Fendt X-Series and P-Series are available in an AutoLevel version. The integral rump levelling system, which pivots the final drives, levels the entire machine is levelled on slopes.

**Full level control on slopes up to 12 percent**  
The AutoLevel system keeps the machine level on slopes up to 12 percent, which allows the threshing, separating and cleaning units to work longer at maximum output. That increases output and productivity for the long term.

**Full traction**  
An optional 4WD is available so that maximum traction is delivered on slopes at all times.

LOW FUEL CONSUMPTION

High efficiency paired with maximum operational reliability.



Fendt 8380 P	6 cylinders	279 kW	379 PS
Fendt 8410 P	6 cylinders	297 kW	404 PS
Fendt 9490 X	7 cylinders	365 kW*	496 PS*

\*Maximum output incl. boost

**Environmentally friendly and economical**  
Fendt combines are powered by AGCO Power engines. These comply with the currently highest emissions standard Tier 4 final. They contribute to protecting the environment and implement the latest technology to generate maximum power with minimum fuel requirement.

**Optimised engine behaviour**  
The engine management is designed for an optimum torque curve. The combine needs this to deliver a constant output under load – according to demand.

Together with the low-friction drives, this allows you to achieve a very low fuel consumption per tonne and excellent economy.

**Long operating hours**  
The low fuel consumption of the machine also determines how long you can work without having to refuel. The Fendt X-Series and P-Series have a 1,000 litre fuel tank and an additional tank for 120 litres of AdBlue (DEF).



SMART DESIGN

Good design makes work easier.

Fast and easy daily maintenance

The air intake screen flips up for easy cleaning from the top and the dust extraction keeps it clean, even under very dusty conditions. The platform offers safe access to the air intake screen and the radiators. Maintenance is fast and easy since there are only a few lubrication points and they are easily accessible. The straightforward mechanical design of the machines, minimises the number of drives, which significantly reduces the required maintenance. Then you can spend more time on more important things – namely, the harvest! Containers and filler necks for the various operating fluids are optimally placed for easy checking of the fill level or for refilling. The same applies to the

engine air filter. Large side flaps offer easy access to the machine components for daily maintenance or quick monitoring.

Best spare parts supply

Fendt offers you professional service and constantly sets standards in the industry in this area. Through regular training programmes, dealer network is trained to provide for a good spare parts inventory and to always keep the machines in operation during the harvest. Fendt and its dealers are ready to give you the best service possible for your investment.

Chopper settings



Chopper maintenance access



Clean air filter



Check fill levels



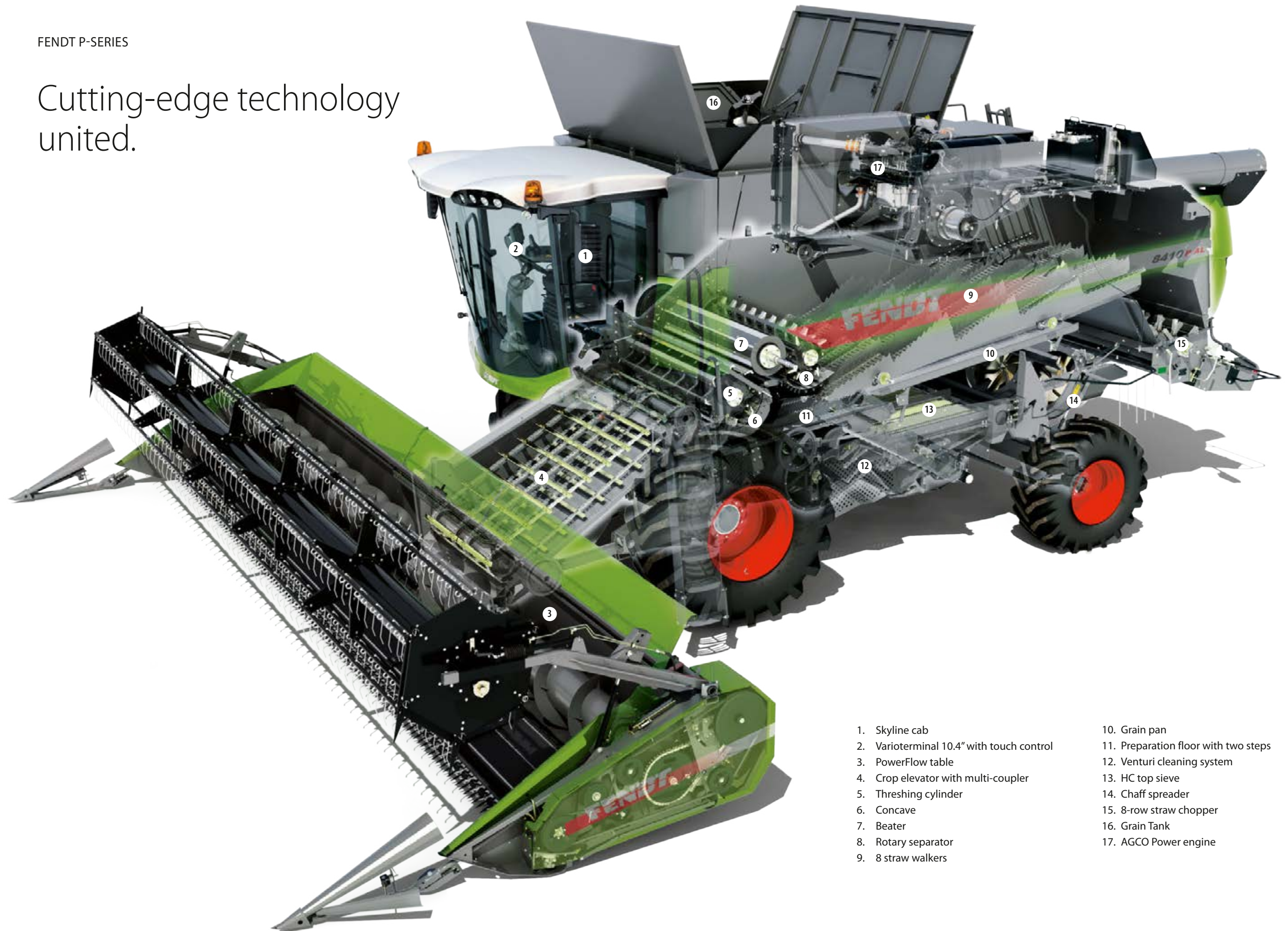
Plenty of space in the engine compartment





FENDT P-SERIES

Cutting-edge technology  
united.

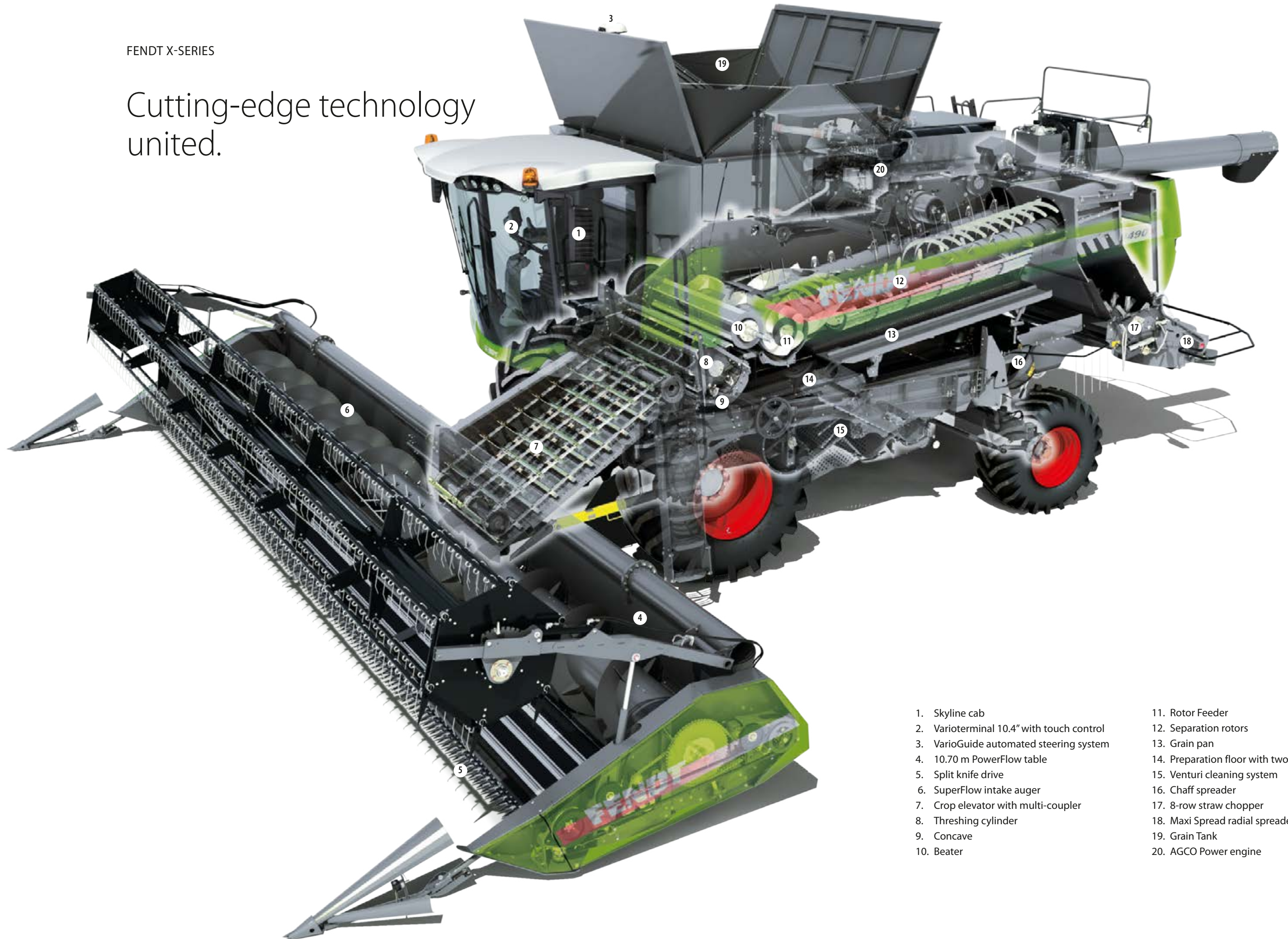


- |   |                                      |
|---|--------------------------------------|
| 1. Skyline cab                            | 10. Grain pan                        |
| 2. Varioterminal 10.4" with touch control | 11. Preparation floor with two steps |
| 3. PowerFlow table                        | 12. Venturi cleaning system          |
| 4. Crop elevator with multi-coupler       | 13. HC top sieve                     |
| 5. Threshing cylinder                     | 14. Chaff spreader                   |
| 6. Concave                                | 15. 8-row straw chopper              |
| 7. Beater                                 | 16. Grain Tank                       |
| 8. Rotary separator                       | 17. AGCO Power engine                |
| 9. 8 straw walkers                        |                                      |



FENDT X-SERIES

Cutting-edge technology  
united.



- |   |                                      |
|---|--------------------------------------|
| 1. Skyline cab                            | 11. Rotor Feeder                     |
| 2. Varioterminal 10.4" with touch control | 12. Separation rotors                |
| 3. VarioGuide automated steering system   | 13. Grain pan                        |
| 4. 10.70 m PowerFlow table                | 14. Preparation floor with two steps |
| 5. Split knife drive                      | 15. Venturi cleaning system          |
| 6. SuperFlow intake auger                 | 16. Chaff spreader                   |
| 7. Crop elevator with multi-coupler       | 17. 8-row straw chopper              |
| 8. Threshing cylinder                     | 18. Maxi Spread radial spreader      |
| 9. Concave                                | 19. Grain Tank                       |
| 10. Beater                                | 20. AGCO Power engine                |



Technical specifications.



Standard and optional equipment  
Standard equipment: ■  
Optional equipment: c □

	Fendt		9490 X	9490 X AL	8410 P	8410 P AL	8380 P	8380 P AL		Fendt		9490 X	9490 X AL	8410 P	8410 P AL	8380 P	8380 P AL
PowerFlow tables	Table widths	m	7.7 / 9.2 / 10.7	7.7 / 9.2	6.8 / 7.7 / 9.2	6.8 / 7.7 / 9.2	6.8 / 7.7 / 9.2	6.8 / 7.7 / 9.2		Straw chopper type		High output straw chopper	High output straw chopper	High output straw chopper	High output straw chopper	High output straw chopper	High output straw chopper
	Reel drive		hydraulic	hydraulic	hydraulic	hydraulic	hydraulic	hydraulic		108 serrated knives		■	■	■	■	■	■
	Cutting frequency	Cuts /min.	1220	1220	1220	1220	1220	1220		Electrically adjustable straw chopper deflector plates		■	■	□	□		
	Rape knives		Electric	Electric	Electric	Electric	Electric	Electric		MaxiSpreader radial spreader		□	□				
	Automatic table guidance		■	■	■	■	■	■		Chaff spreader		■	■	■	■	■	■
	Automatic reel speed control		■	■	■	■	■	■									
Corn header	CornFlow™		□	□	□	□	□	□		Make		AGCO Power	AGCO Power	AGCO Power	AGCO Power	AGCO Power	AGCO Power
	Number of rows (foldable)		8	8	6 – 8	6 – 8	6 – 8	6 – 8		Cubic capacity	litres	9.8 (7 cylinders)	9.8 (7 cylinders)	8.4 (6 cylinders)	8.4 (6 cylinders)	8.4 (6 cylinders)	8.4 (6 cylinders)
	Number of rows (rigid)		8	8	6 – 8	6 – 8	6 – 8	6 – 8		Rated engine speed	rpm	2100	2100	2100	2100	2100	2100
	Distances between rows	cm	70/75	70/75	70/75	70/75	70/75	70/75		Maximum power	kW/hp			297/404	297/404	279/379	279/379
	Stalk chopper		□	□	□	□	□	□		Maximum power including power boost	kW/hp	365/496	365/496				
	Intake auger		■	■	■	■	■	■		Fuel tank capacity	litres	1000	1000	1000	1000	1000	1000
Crop elevator	No. of chains		4	4	4	4	4	4		DEF (AdBlue) tank capacity	litres	120	120	120	120	120	120
	Reverser table and crop elevator		hydraulic	hydraulic	hydraulic	hydraulic	hydraulic	hydraulic									
Hyperforma threshing unit	Threshing cylinder width	mm	1680	1680	1680	1680	1680	1680		Ground drive		■	■	■	■	■	■
	Threshing cylinder diameter	mm	600	600	600	600	600	600		No. of gears		4 gears, shifted electrically	4 gears, shifted electrically	4 gears, shifted electrically	4 gears, shifted electrically	4 gears, shifted electrically	4 gears, shifted electrically
	Concave bars threshing cylinder	Number	8	8	8	8	8	8		Four-wheel drive axle		□	□	□	□	□	□
	Threshing cylinder speed standard	rpm	360 – 1080	360 – 1080	360 – 1080	360 – 1080	360 – 1080	360 – 1080									
	Concave area	m²	1.18	1.18	1.18	1.18	1.18	1.18		Cab		■	■	■	■	■	■
	Wrap angle concave	Degrees	117.5	117.5	117.5	117.5	117.5	117.5		Skyline cab		■	■	■	■	■	■
Residual grain separation	Beater separation area	m²	0.33	0.33	0.39	0.39	0.39	0.39		Automatic climate control and heating		■	■	■	■	■	■
	Rotary separator diameter	mm			500	500	500	500		Electrically adjustable heated exterior mirrors		■	■	■	■	■	■
	RotorFeeder diameter	mm	500	500						Additional work lights (stubble light, row finder, rear work lights)		■	■	■	■	■	■
	Rotary separator speeds	rpm			480/900	480/900	480/900	480/900		Multimedia navigator		□	□	□	□	□	□
	RotorFeeder speeds	rpm	480/950	480/950						Variotronic		■	■	■	■	■	■
	Rotary separator separation area	m²			1.00	1.00	1.00	1.00		Yield measurement / moisture measurement		■	■	□	□	□	□
	RotorFeeder separation area	m²	0.39	0.39						VarioDoc Pro and VarioGuide		□	□	□	□	□	□
	Residual grain separation		2 rotors	2 rotors						AgCommand™		□	□	□	□	□	□
	Rotors diameter	mm	475	475						ConstantFlow		□	□	□	□	□	□
	Rotors length	m	4.2	4.2													
	Rotors separation area	m²	3.54	3.54						Weights and dimensions							
	Rotors angle of wrap	Degrees	150	150						Length without table	m	9.95	9.95	9.95	9.95	9.95	9.95
	Rotors speed	rpm	360 – 1000	360 – 1000						Width without table, standard tyres	m	3.8	3.8	3.8	3.8	3.8	3.8
	Straw walkers	Number			8	8	8	8		Weight base machine, without table, without optional equipment	kg	18,400	18,900	17,100	17,600	17,100	17,600
	Straw walkers steps	Number			5	5	5	5		Length without table	m	9.95	9.95	9.95	9.95	9.95	9.95
	Straw walkers separation area	m²			7.9	7.9	7.9	7.9		Width without table, standard tyres	m	3.8	3.8	3.8	3.8	3.8	3.8
	Total separation area	m²	5.44	5.44	10.47	10.47	10.47	10.47		Weight base machine, without table, without optional equipment	kg	18,400	18,900	17,100	17,600	17,100	17,600
Cleaning	Venturi cleaning system		■	■	■	■	■	■		Tyres							
	Total cleaning area	m²	5.3	5.3	5.3	5.3	5.3	5.3		Front tyres (standard)		800/65 R32	800/65 R32	800/65 R32	800/65 R32	800/65 R32	800/65 R32
	Fan speed adjustment		Electric	Electric	Electric	Electric	Electric	Electric		Rear tyres (standard)		500/70-24	500/70-24	500/70-24	500/70-24	500/70-24	500/70-24
	Fan speed	rpm	460 – 1150	460 – 1150	460 – 1150	460 – 1150	460 – 1150	460 – 1150		ATRAK crawler track		□		□			
	Two steps		■	■	■	■	■	■									
	Electric sieve adjustment		■	■	■	■	■	■									
	Model		Separate rethresher	Separate rethresher	Separate rethresher	Separate rethresher	Separate rethresher	Separate rethresher									
Grain Tank	Returns indicator		■	■	■	■	■	■									
	Grain tank capacity	litres	12500	10500	12500	10500	10500	10500									
	Grain tank unloading		Top unloading	Turret unloading	Turret unloading	Turret unloading	Turret unloading	Turret unloading									
	Unloading speed	l/sec	120	120	120	120	120	120									



# FENDT

## Leaders drive Fendt.



[www.fendt.com](http://www.fendt.com)

AGCO GmbH - Fendt Marketing  
D-87616 Marktoberdorf, Germany

 **AGCO**  
Your Agriculture Company

Fendt is a worldwide brand of AGCO.  
All data regarding scope of delivery, appearance, performance, dimensions and weights, fuel consumption and running costs of vehicles reflect the latest information available at the time of print. These may change by the time of purchase. Your Fendt dealer will be happy to inform you about any changes. The vehicles shown do not feature country-specific equipment.