



# FENDT

## Fendt Cargo T740



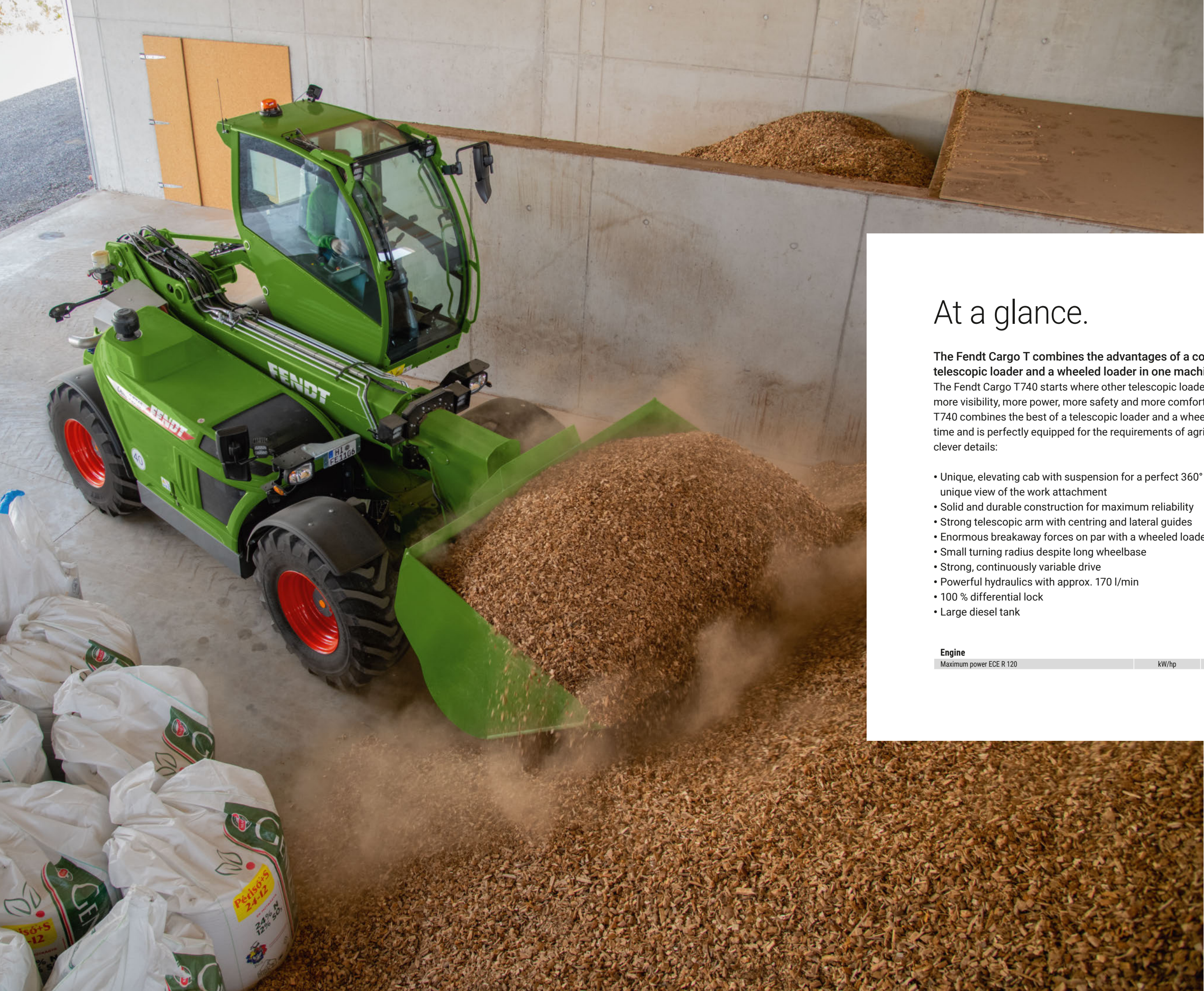




# Fendt Cargo T740

4 At a glance.	22 Drive.
6 Spotlights.	26 Fendt Services.
10 Cab.	32 Technical Details.
14 Boom.	34 Equipment variants.
18 Chassis.	35 Technical specifications.





## At a glance.

The Fendt Cargo T combines the advantages of a conventional telescopic loader and a wheeled loader in one machine.

The Fendt Cargo T740 starts where other telescopic loaders stop and offers you more visibility, more power, more safety and more comfort. The Fendt Cargo T740 combines the best of a telescopic loader and a wheeled loader for the first time and is perfectly equipped for the requirements of agriculture with many clever details:

- Unique, elevating cab with suspension for a perfect 360° all-round view and a unique view of the work attachment
- Solid and durable construction for maximum reliability
- Strong telescopic arm with centring and lateral guides
- Enormous breakaway forces on par with a wheeled loader of the same size
- Small turning radius despite long wheelbase
- Strong, continuously variable drive
- Powerful hydraulics with approx. 170 l/min
- 100 % differential lock
- Large diesel tank

Engine	Cargo T740	
Maximum power ECE R 120	kW/hp	100/136





## Fendt Cargo T740 Spotlights.

Here you will find the special Fendt solutions, the so-called Fendt Spotlights, which make all the difference and make your work better every day.



### 1. Lift cab with all-round visibility and memo function

- Can be raised to a height of 4.10 m
- 360° all-round view
  - Optimal downward view, because no front console and extremely narrow steering column

### 2. Unique cab suspension

- Vibration-damped cab with nitrogen accumulator

### 3. Operating concept with Fendt colour logic

- Colour logic of the control panel identical to the Vario tractors

### 4. Control arm rest mounted on the seat

- No relative movement between driver's seat and operator's armrest

### 5. Different rear hitch options

### 6. Z-bar linkage

- High breakaway forces
- Optimum vertical parallel guide

### 7. Boom centrally mounted

- No offset
- Optimum force application
  - Closed frame under the boom

### 8. Special telescopic guide

- Self-centring of the boom







#### 1. Fendt TopViewCab

- New, curved windscreen
- No B-pillar on the right
- Battery isolator switch in cab
  - Memory function for cab position
- Lifting cab system
- Low clearance by offsetting the kinematics

#### Telescope

- Optimised cross-sectional shape, thereby reducing the number of wear blocks needed
- Reduction of weight and installation space

#### Operator's workstation

- New joystick
- New operating concept with Fendt colour logic and membrane keyboard

#### Bonnet

- New, attractive design
- Optimised sealing for exhaust gas treatment
- Optimum coverage of hot surfaces



#### 2. Other innovations:

- Improved pipe protection
- Improved overload system
- Elegant lighting fixtures
- Air-sprung comfort seat
- Rear view camera
  - Optional premium camera package (reverse camera centre + camera on right hand side)
- AdBlue tank located on the right hand side of the ballast weight







## Cab.

Not only does the lifting cab give you completely new angles of view, but you also get a completely new machine concept - the Fendt Cargo T.





### 1. Fendt TopViewCab

- Cabin capable of being raised to a height of 4.10 m
  - Hydraulically raised via foot switch
- 360° all-round view
- Floor-to-ceiling, upward curved windscreen made of safety glass
  - No dashboard obscuring the view
- Safety glass roof window
- 5-post construction (no B-pillar on the right) for even better all-round visibility



- + Guarantees the best overview when loading, unloading
- + Excellent view also upwards
- + The cab is raised outside the danger area
- + Extremely robust

### 2. Cab comfort

- Vibration-damped cab with nitrogen accumulator
- Sun visor on windscreen and roof window
- Open side door 90°
- Opening the side window 180°
- Comfortable entry with extendable step
- Heated rear window
- Optimised arrangement of ventilation outlets

### 3. Operator's workstation

- Air-sprung comfort seat
- Very narrow, double adjustable steering column
- Control arm rest mounted on the seat
  - Operating concept with Fendt colour logic and membrane keyboard
- Central display attached to A-pillar
- Start/Stop button for engine
- USB port (e.g. mobile phone charging possible)



- + Pleasant working conditions
- + No relative movement between driver's seat and operator's armrest
- + Familiar operating concept





## Boom.

The cantilever arm is impressive with its solid construction. Optimum, even force application and distribution guarantee precise and efficient work.





### Swingarm

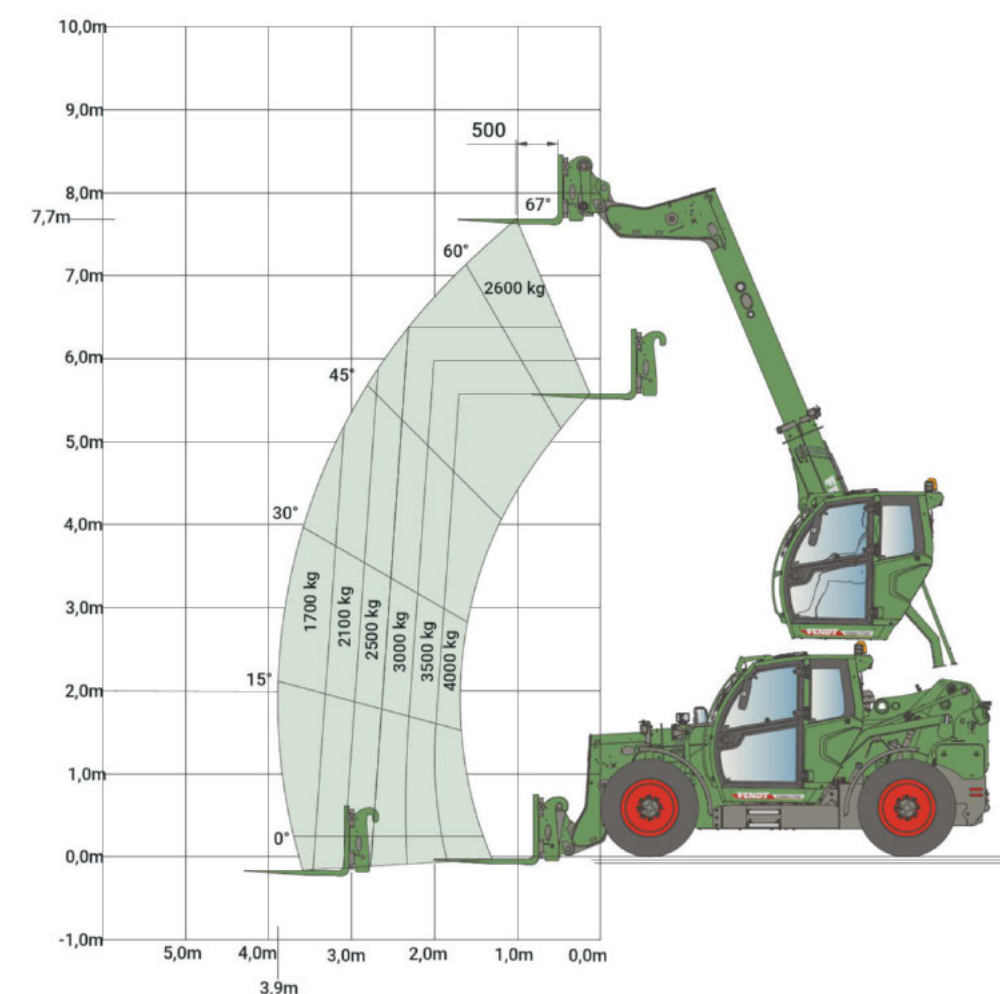
- Z-kinematics like a wheeled loader
- Due to the extending cylinder the breakaway force is 65 kN
- Perfect force parallelogram
  - Bucket does not move forward horizontally when tipping back, so clean loading when close to walls
- Compensation cylinder for parallel guidance
- 1 additional valve on the boom head



- + Wheeled loader technology in a telescopic loader
- + Extremely high breakaway force
- + Optimal power flow
- + Simple coupling and uncoupling of implements

### Boom

- Special boom geometry with bevelled corners
- Designed for industrial use in multi-shift operation
- End position damping of the telescopic ram
- 3.72 m range (front wheel to load centre pallet fork)
- Boom positioned centrally in the chassis
- Large main bearings
- Lateral guide elements for the boom on the main frame
- Closed frame under the boom reduces dirt incursion



- + Equipped for heavy and demanding applications
- + Solid construction
- + Optimum force development





## Chassis.

The consistently well thought-out machine concept provides new possibilities right down to the frame. To prevent torsion and damage, the telescopic arm is mounted exactly in the middle of the vehicle.





### 1. Frame

- Solid steel frame
- Due to the machine concept, the lifting cylinder can be mounted in a higher position
- Telescope is located in the centre of the frame - no torsion via twisting
- Lateral guide for boom on main frame
- Closed frame under the boom
- Fully covered underbody



- + Easy cleaning because there are no openings for dirt to collect
- + Maximum torsional rigidity
- + High level of stability thanks to balanced weight distribution



### 2. Chassis

- Reinforced heavy duty axles
- The rear axle is mounted in a freely oscillating manner as standard
- 38° steering angle with standard tyres
- External turning radius 4.15 metres
- Differential lock in the rear axle prevents the wheels from spinning
- Service brake: Hydraulically actuated disk brakes running in the oil bath (wear-free)

### 3. 3 different types of steering

- Axle synchronisation for switching between steering modes
- Front axle steering
    - e.g. for transport/road traffic
  - All-wheel steering
    - Smallest turning radius in tight conditions
  - Crab steering
    - e.g. for precise approach to obstacles



- + Steering mode can be optimally adapted to the work process

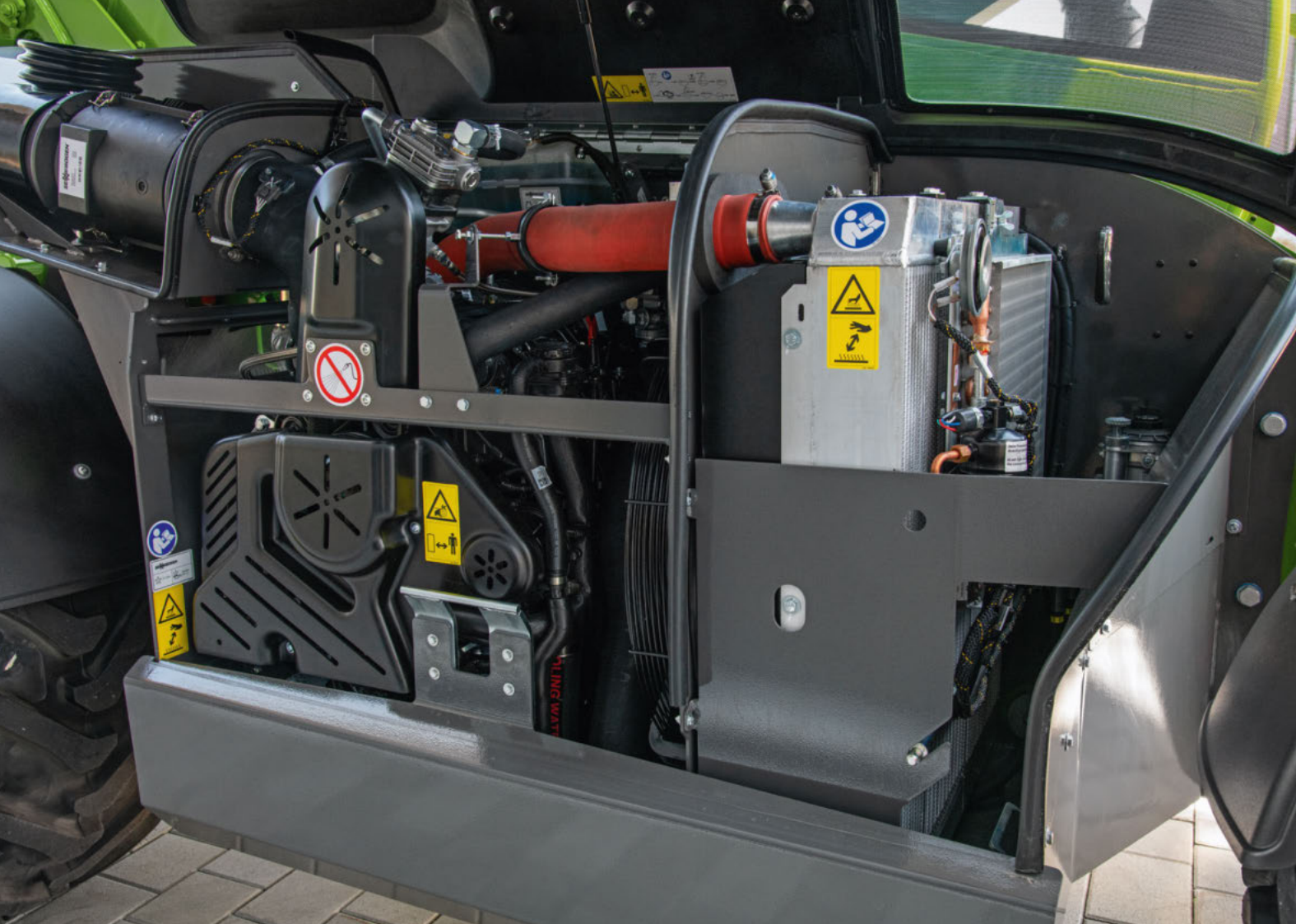




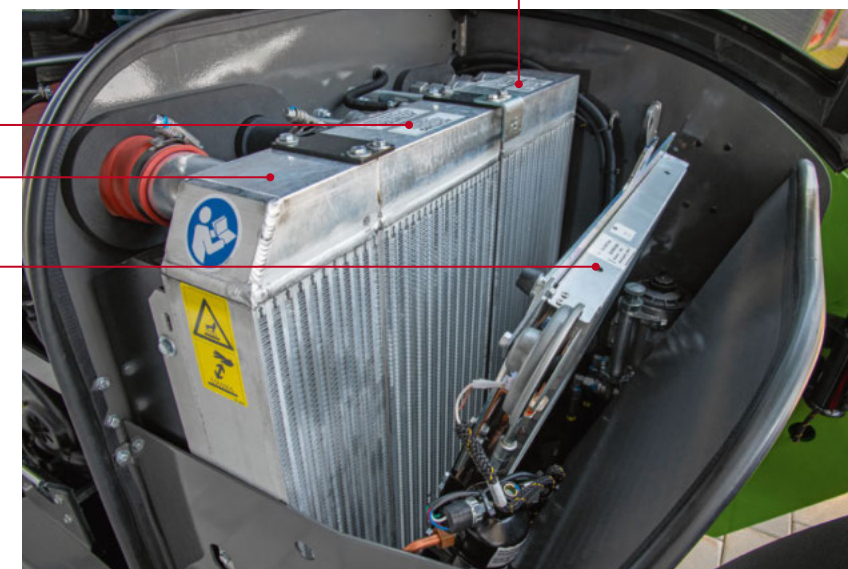
## Drive.

The Fendt Cargo T has the latest engine and exhaust technology with sufficient power for all applications. Despite these elaborate components, there is still plenty of space in the engine compartment. The air can flow perfectly through the engine compartment, which ensures that the Fendt Cargo T never gets too hot. The CompactDrive transmission with 45° axial piston variable displacement pump has optimum efficiency in every driving situation. This allows the Fendt Cargo T740 to accelerate steplessly, as you know from the Fendt tractors with the Vario transmission.





Hydraulic oil cooler  
Water cooler  
Intercooler  
Air conditioning condenser



### 1. Engine

- Manufacturer: Cummins
- Emission level: 5
- Rated output: 100 kW / 136 hp
- Cylinder capacity: 3800 cm<sup>3</sup>
- Max. Speed: 2200 rpm
- Max. Torque: 520 Nm (at 1200 rpm)
- Fuel tank volume: 160 litres
- AdBlue tank volume: 16 litres



- + Performance for every application
- + Very high torque
- + Large engine compartment
- + Good accessibility
- + Optimal heat management



1.

### Transmission

- CompactDrive transmission with 45° axial piston variable displacement pump
- brake-inch pedal
- hydrostatic all-wheel drive in closed circuit
- low-pressure adjustment
- Automatically high speed or high torque depending on the load
- Continuously variable drive:
  - Continuous acceleration as with the Fendt Vario transmission

### Driving modes

#### 2. Bucket mode

- For loading material with a bucket
- Maximum engine speed is available

#### 3. Pallet mode

- For stacking work
- Quiet, fuel-saving and precise
- Engine speed max. 1600 rpm
- Max. speed: 20 km/h

#### 4. Road mode

- For road travel
- Front axle steering
- Working hydraulics disabled
- Drive optimised for road travel



- + Selecting the optimum driving mode with a button
- + Simple and fast changeover
- + Machine always in perfect driving condition





## Fendt Services.

A Fendt machine is a high-tech product for the highest of demands. Accordingly, the certified Fendt sales partners offer first-class service.



+44 330 123 9909

You can reach the certified service partners around the clock via the Fendt Customer Hotline







### The best product under the best protective shield

Extraordinary service partners and service:

- A short distance between our trained service employees and you
- 24/7 Replacement parts availability during the season
- 12 month guarantee on Fendt original parts and installation

### 100% quality. 100 % Service: Fendt Services

- Fendt Demonstration Service
- Fendt Expert Driver Training
- AGCO Finance - Financing and Leasing Offers
- Fendt Care – Service contracts and warranty extension
- Fendt Certified – Used machine programme

Ensure the operation of tomorrow today.

#### Fendt Demonstration Service

- Get on and try it out, instead of just talking about it
- Basis for an optimal decision-making process

#### Fendt Expert Driver Training

- Exclusive practical training with professional trainers
- Optimization of efficiency by learning all of the functions and exploiting the entire performance potential of the Fendt machine

#### Individual financing and leasing models

- Credit financing by AGCO Finance with attractive conditions, flexible terms and planable costs
- Tailored leasing offers via the Fendt sales partner



#### Fendt Certified – Used machine programme

Used agricultural machines with proven high-quality and certified Fendt quality

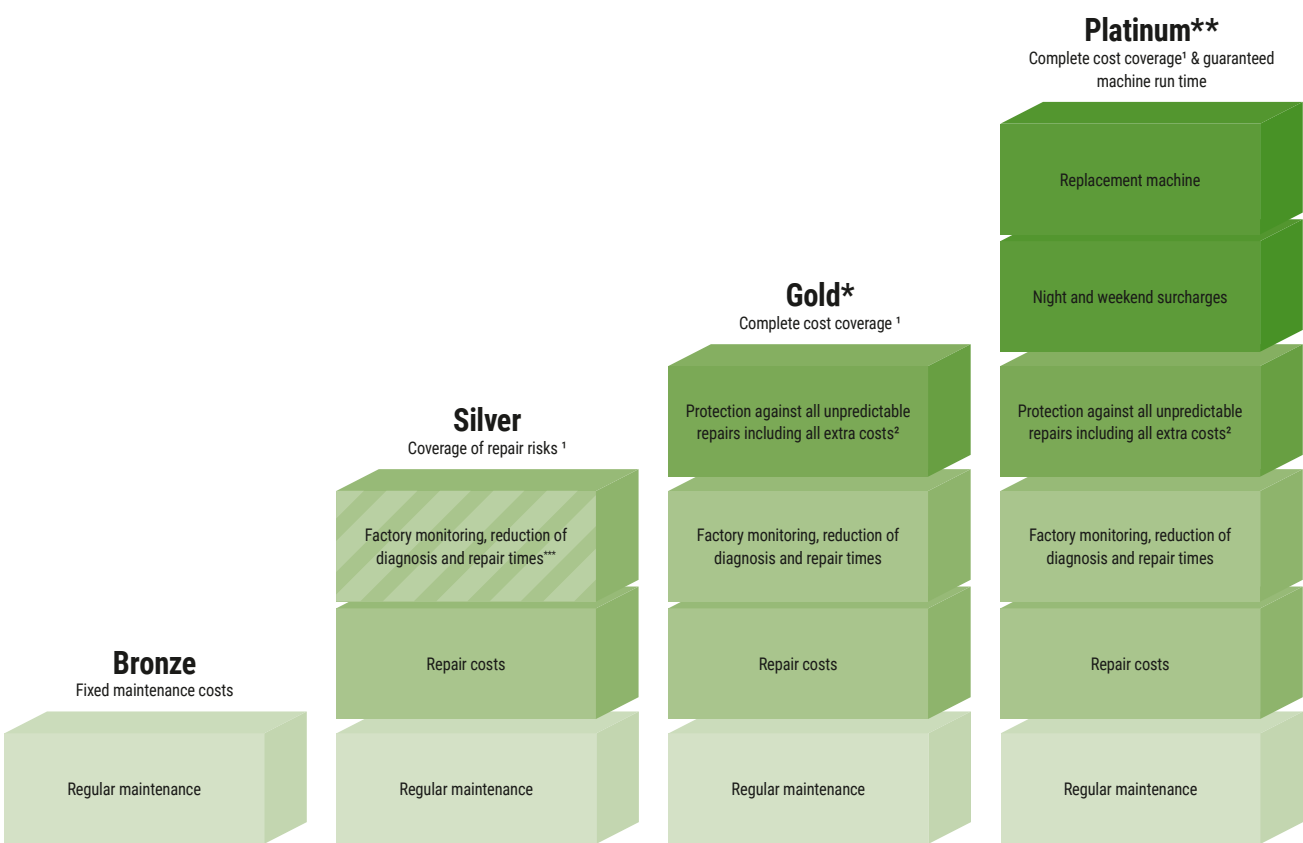
##### Advantages:

- Certification according to demanding quality standards
- Extensive initial check (technology, wear, appearance)
- Meticulous maintenance of wearing parts
- replacement, cleaning and painting of components as needed
- Warranty included

#### Fendt Care – Service contracts and warranty extension

- Tailored maintenance and repair service that goes beyond the legal warranty
- Maximum operational safety
- Flexible terms and rates with and without deductible
- Full cost control and planning security
- Only original parts used with guaranteed production quality and tested for functional reliability for optimal value retention of the Fendt machine





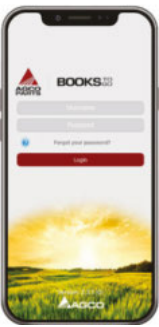
# Fendt Care.

## Cost control and planning security with the FendtCare rates

- Comprehensive range of services to ensure operational safety and the risk of repairs on new machines
- Full cost control with the best service
- Tailored solution for the fleet from maintenance contract to complete worry-free package including replacement machine

## Smartphone-App “AGCO Parts Books to go”

- Find replacement parts quickly and order directly
- Download via the App Store or the Google Play Store
- Access data via the Fendt sales partner



App Store



Google Play Store

 Cost advantages with Fendt Connect (optional)	 Only for tractors with Fendt Connect
---	--

Available for	Complete Fendt Portfolio	Complete Fendt Portfolio	Wheeled tractor with Fendt Connect & telescopic loader <sup>8</sup>	Wheeled tractor with Fendt Connect
Customer benefit (deductible)	Operation safety of the machine	Coverage of large-scale damage <sup>3</sup> (490 €)	Complete coverage with full cost control including all extra costs (0 €)	Complete coverage with full cost control including all extra costs & guaranteed machine run time (0 €)
		Comprehensive coverage at attractive rates (190 €)		
		Complete coverage with full cost control (0 €)		

Maximum coverage	8 Years / 8,000 OH	5 Years / 3,000 OH	5 Years / 5,000 OH	3 years / 2,000 OH <sup>4</sup>	3 years / 4,000 OH <sup>5</sup>	3 years / 25,000 bales <sup>6</sup>	5 Years / 50,000 Bales	8 Years / 4,000 pump-H	5 Years / 8,000 OH	5 years / 750 OH <sup>7</sup>
------------------	--------------------	--------------------	--------------------	---------------------------------	---------------------------------	-------------------------------------	------------------------	------------------------	--------------------	-------------------------------

OH = operating hours; H = hours; <sup>1</sup> excluding wear and tear; <sup>2</sup> travel costs, recovery / towing, troubleshooting with additional diagnostic tools, use of dynamometer, oils and filters if engine / transmission is repaired; <sup>3</sup> only available for machines with self-propelled & RG300 & Momentum; <sup>4</sup> ISOBUS-enabled machines only; <sup>5</sup> PR, VR & XR only; <sup>6</sup> incl. Roller; <sup>7</sup> Momentum 16 & 24 only; <sup>8</sup> Gold rate for telehandler also available without Connect; <sup>\*</sup>Gold rate only available in DE/FR/GB/IT/BG/CZ/EE/HR/HU/LT/LV/LI/MD/RO/RS/SE/SI/SK/UA/AT/LU/NL/CH/BE/BY/NO/PL/DK; <sup>\*\*</sup>Platinum only available in DE, EN, FR; <sup>\*\*\*</sup>optional with Fendt Connect





Reversing camera  
Camera display



Recall memo function for cab height



• Cyclone pre-separator for the air filter  
(up to 98% separation)



Air-conditioning  
Radio USB DAB MP3 Bluetooth



• Automatic trailer coupling (Rockinger)  
• Maximum trailer load: 18.5 t



**Assembly - Options**  
• Compressed air brake system



**Central lubrication**  
• Supply of all lubrication points  
including those on the telescopic  
head



Rotating beacon light on cab



LED lighting boom

## Technical Details.

### Attachments– Options

- Adapter frame for Euro brackets
- 2.5 m³ light goods bucket
- 3.0 m³ light goods bucket
- 1.6 m³ loader bucket
- 2.0 m³ loader bucket
- 1.9 m³ Silage grab bucket
- 1.1 m³ soil bucket without teeth
- Tine adjustment with lateral shifter
- Pallet fork, tine length 1500 mm
- Bale spike
- Round and square baler tine
- Big bag carrier
- Mounting plate load capacity 4500 kg



**Chassis Options**  
**Pendulum axle lock for the rear  
axle**  
• Function 1: swings free  
• Function 2: automatic activation at  
standstill  
• Function 3: permanently locked



**Cooling - Options**  
• Reversible fan  
• Activation automatically in 3  
intervals (20, 40 or 60 min.) or  
manual activation via a button



**Dirt scraper**  
• Prevents dirt from entering the  
interior of the telescopic boom and  
damage occurring



# Equipment variants.

Cargo T740

Engine	
Reversible fan	□
Fuel pre-filter	■
Cyclone blower for air filters	□
Electrical engine pre-heating	□
Transmission	
Stepless drive 20 km/h	■
Stepless drive 30 km/h	□
Stepless drive 40 km/h	□
Loader, forklift and road mode	■
Slow-drive control	□
Acoustic signal when reversing	■
Loading system	
Overload system	■
Z-bar linkage	■
Boom absorption	□
Dirt wiper on telescope	□
Shake function	■
Automatic bucket reset	□
Tilt-cylinder lock	□
Sennebogen quick release, mechanical	■
Sennebogen quick release, hydraulic	□
Quick release compatible with JCB implements, hydr.	□
Quick release compatible with Manitou implements, hydr.	□
Quick-change device suitable for Kramer implements, hydr.	□
Weighing system	□
Implements	
Pallet fork, max. load capacity 4,500 kg, tine length 1500 mm	□
Tine adjustment with lateral shifter	□
1.1 m³ Dirt bucket without teeth for bulk densities up to 1800 kg/m³	□
1.6 m³ loading bucket for bulk densities of up to 1200 kg/m³	□
2.0 m³ loading bucket for bulk densities of up to 1100 kg/m³	□
2.5 m³ light-goods bucket with turning blades for bulk densities of up to 900 kg/m³	□
3.0 m³ light-goods bucket with turning blades for bulk densities of up to 500 kg/m³	□
Silage grip bucket 1.9 m³	□
Large bale forks – heavy-duty – width 2 m with 4 tines	□
Round and square baler tine	□
Big bag holder	□
Adaptor for Sennebogen/euro pick-up	□
Hydraulics	
Auxiliary valve 1 on tool carrier	■
3rd hydr. working circuit on tool carrier	□
Auxiliary valve 2 on rear	□
Continuous function of auxiliary valve 1	□
Continuous function of auxiliary valve 2	□
Electric hydraulic tank pre-heating	□
Bio hydraulic oil	□
Low-temperature hydraulic fluid	□

Cargo T740

Cab	
Comfort lift cab with suspension system	■
Memory function position cabin	□
Full-length panoramic windscreen	■
Windscreen made from shatter-proof glass	□
Side windows including doors with Hammerglass® safety glass	□
Roof window made from shatter-proof glass	□
Joystick on armrest	■
Comfort driver's seat air-sprung, heated	■
Height and tilt-adjustable steering column	■
Air-conditioning	□
Sunblind for roof window	■
Sunblind for windscreen	■
Wipers and washers for roof window	□
Wipers and washers for rear window	□
Protective grille for roof window, FOPS Level 2	□
Radio including USB and SD interface, MP3 and Bluetooth	□
USB port with charging function	■
Camera system	□
Premium camera system, 2 cameras	□
Active charcoal filter	□
Lighting	
Approved lighting set	■
2 working lights at front of cab, LED	■
Working lights at rear of cab, LED	■
2 headlights at ground boom, LED	□
All-round lighting bundle	□
1 rotating beacon	□
Protective grille for headlights at front	□
Chassis	
Swing axle lock on rear axle	□
Front axle, all-wheel and crab steering	■
Additional equipment	
Towing hitch 3t	□
Trailer hitch with auto coupling, height-adjustable	□
Air pressure brake for trailer control	□
7-pin socket for trailer operation 12 V	□
7-pin socket for trailer operation 24 V	□
7-pin socket on boom head	□
Mirrors right and rear	■
Automatic central lubrication system	□
Body paint in choice of RAL colour	□

# Technical specifications.

Cargo T740

Performance characteristics		
Max. lift height	mm	7700
Max. Load capacity (LSP 500 mm)	kg	4000
Max. load at max. height	kg	2600
Max. load at max. outreach	kg	1700
Max. extension	mm	3720
Tractive power	kN	63
Breakaway torque on the bucket	kN	65
Engine		
Rated power ECE R 120	kW/hp	100/136
Maximum power ECE R 120	kW/hp	100/136
No. of cylinders	Number	4
Cubic capacity	cm³	3800
Rated speed	rpm	2200
Max. torque	Nm	550
Fuel level	litres	160.0
AdBlue level	litres	16.0
Transmission		
Transmission type		CompactDrive
Max. road speed, standard	km/h	20
Max. road speed, Option 1	km/h	30
Max. road speed, Option 2	km/h	40
Max. road speed, reverse	km/h	20 (30/40)
Hydraulics		
Powershift variable flow pump	l/min	170
Working pressure	bar	300
Electrical features		
Batteries	Number	2
Battery power	Ah/V	105 / 24
Tyres		
Standard tyres		400/70 R24
1. Optional tyres		460/70 R24
2. Optional tyres		500/70 R24
Dimensions		
Overall length including tool carrier	mm	5460
Overall height, cab down	mm	2470
Overall height, cab up	mm	4400
Overall width with standard tyres	mm	2435
Overall width with max. tyres	mm	2440
Cab width	mm	1000
Distance from middle of front axle to front of tool carrier	mm	1360
Distance from middle of rear axle to rear of machine	mm	1000
Max. ground clearance	mm	400
Wheelbase	mm	3100
Track width	mm	1940
Rear startup angle	°	35
Min. turning radius with standard tyres	m	4.15
Weights		
Unladen weight (standard equipment, full tanks, with driver)	kg	9400
Max. trailer load of towing hitch	kg	3000
Max. trailer load of towing hitch, height-adjustable (optional)	kg	18500





It's Fendt. Because we understand Agriculture.



[www.fendt.com](http://www.fendt.com)

AGCO GmbH – Fendt Marketing  
87616 Marktoberdorf, Germany



Fendt is a worldwide brand of AGCO.  
All details regarding scope of delivery, appearance, performance, dimensions and weights, fuel consumption and running costs of vehicles reflect the latest information available at the time of print. These may change by the time of purchase. Your Fendt dealer will be happy to inform you about any changes. The vehicles shown do not feature country-specific equipment.