

FENDT

Fendt 200 Vario





A true great –
anytime, anywhere.

The Fendt 200 Vario is a true star of the compact standard tractor sector. Experience the unbeatable Fendt Vario technology within a power range of 77 to 111 HP maximum power. Enjoy the tried and trusted continuously-variable gearbox and the easy controls. Fendt has constantly developed this technology. Fendt puts 100% into the Vario.



Engine		207 Vario	208 Vario	209 Vario	210 Vario	211 Vario
Rated power ECE R 120	kW/hp	53/72	60/81	67/91	73/99	74/101

True greats keep their promises.

Depending on the application, the Fendt 200 Vario offers the right functions for your needs in grasslands, in alpine locations, in crop cultivation, during transport, during maintenance work, in specialised crops, during municipality work or as a yard tractor. It convinces through robustness and durability. The Fendt 200 Vario Profi provides that certain something to give you the added comfort and functions to make your daily routine easier.

Flexible, compact, efficient

The Fendt 200 Vario Profi is a standard compact tractor to make your daily work more flexible and efficient. It offers:

- TIM Guidance-ready: Guidance system preparation module
- VarioActive: Superimposed steering system
- Reversible fan
- Steering angle-based 4WD and automatic differential lock
- Up to 104 l/min hydraulic power
- PowerBeyond (LS Hydraulic) connections
- User-friendly Fendt Cargo front loader control via electric crossgate lever
- LED work lights
- Footwell heater



True greats –
up to any task.

Fendt 200 Vario – the tool for the job

People who know compact standard tractors know what's hidden inside: A wide range of functions and efficient technologies. The Fendt 200 Vario is therefore your reliable way of overcoming the daily challenges.

FENDT 200 VARIO: ENGINE

A true great – Power and efficiency in harmony.

Pure performance

The performance range of the Fendt 200 Vario goes from 77 to a maximum output of 111 HP. The 3-cylinder AGCO power engine features passion and dynamics, as well as high performance coupled with unrivalled stability. The 4-valve technology together with the turbocharger and wastegate utilises the full power potential.

Easy to clean

Thanks to the diesel oxidation catalyst (DOC) and external exhaust gas recirculation (AGR), the stringent emissions standards are met without excessive maintenance work. These compact tractors are extremely economical: reduced speeds and high torque allow transport speeds of 40 km/h at just 1,750 rpm. A new cooler unit, the high-performance air filter and reversible fan reduce the maintenance work needed to allow continuous operation with no interruption.

Efficiency for top performance

The Tractor Management System (TMS) controls the engine in tandem with the continuously variable gearbox to provide the ultimate in cost efficiency. TMS makes the tractor really easy to drive, either using the joystick or with the driving pedal. When TMS is activated, the tractor electronics control the engine speed and transmission ratio. The driver only needs to set the desired speed, TMS controls the rest.

Economical and low-maintenance

The fuel pre-filter with thermostatic valve always allows the tractor to operate reliably, even at very low temperatures well below zero, since the pre-warmed fuel flows from the return into the pre-filter. The radiator and filter are arranged for ease of maintenance. A straightforward dashboard displays a wide range of information, e.g. PTO speed, road speed or even fuel consumption.

The targeted cooling of the recirculated exhaust gas (EGReX) significantly reduces the fuel consumption. Together with the diesel oxidation catalyst (DOC), this ensures compliance with emissions regulations.



The TMS automatically controls the engine speed and gearbox ratio in the field for best efficiency with differing loads.



The tractor runs on level ground at a reduced speed. On a slope, the TMS increases engine speed and adjusts the gearbox ratio. As soon as the tractive power requirement is reduced, the TMS reduces the engine speed to the most fuel efficient range possible.



Versatile multi-function display: Display what you need for your work, e.g. the current and average fuel consumption or the worked area.

FENDT 200 VARIO: VARIO TRANSMISSION AND PTO.

A true great offers endless possibilities.

Fendt Vario = ride comfort

The continuously-variable Vario transmission guarantees ride comfort and offers potential savings. From 0.02 km/h (20 m per hour) up to a maximum speed of 40 km/h with continuous power transmission without changing gears, So you can always work at the exact speed to suit the work at hand. Even on extreme slopes you can brake continuously until you come to a standstill, secure the machine on the slope using the active stop control, and then drive away smoothly. This protects your ground and provides safety.

The right speed

for the PTO can be conveniently selected using a rotary control: 540, 540E and 1000 rpm are available in the rear (ground PTO optional). The external controls at the rear are extremely practical. The Fendt 200 Vario PTO has outstanding efficiency, since the flow of power to the PTO stub flows through a direct drive line from the Vario transmission. A 540E (750 rpm/min at the rated engine speed) or a 1000 PTO is available for the front mount.

Well-balanced and efficient with TMS

You just have to specify the desired speed. The tractor management system (TMS) controls the engine rpm and gearbox ratio to always offer the ultimate in cost efficiency. Frequently changing operations are part of the daily routine of a compact standard tractor. Whether for transport or in the fields, when working for local councils or on farms, Fendt 200 Vario has been designed for ideal performance, low fuel consumption and reduced wear on components.

Relaxed driving at the limit

The Fendt 200 Vario also offers fully automatic maximum load control 2.0 in the compact standard tractor segment. The overloading determines the power consumption, and the engine always operates within the ideal speed range. Operators can also adjust the maximum output control manually.

The Fendt Vario transmission ML75 is a continuously variable power split ground drive with one speed range. The hydrostats can be swung 45° and power-splitting via a planetary gear set ensures exceptional efficiency over the entire speed range.



The button located at the end of the steering wheel stalk, can be used to control reverse gear and the Stop & Go function.



You can work with the correct PTO rpm at any speed thanks to independent control of road speed and engine speed.

Stay safe and wear-free, and get back in the cab, even on hills with high loads: Thanks to active stop control of the Fendt Vario transmission, it works without any jolting.

FENDT 200 VARIO: CAB

A true great has inner qualities that convince.



As an option, LED work lights can be fitted front and back to ensure all-round optimal illumination when working with the Fendt 200 Vario at night.

Operate efficiently – drive comfortably

The Fendt 200 Vario cab, specially designed for this class, provides a top quality work space: unparalleled legroom with no obstacles and a perfect panoramic overview. All working and operating functions are integrated into a central operating concept on the right-hand side. The tilting and height-adjustable steering wheel is used to adjust the seat position to best suit your needs.

Comfortable workplace

The low design heights and the even cab floor in the Fendt 200 Vario allows you to climb in and out comfortably, and provides the ultimate in legroom without the gearbox tunnel. With the Comfort Seat with air suspension in the right position, you'll feel fighting fit even after a long working day. The optional cab suspension provides perfect ride comfort.

Perfect work environment – perfect cab

The powerful heating and ventilation system with integral manual or fully automatic climate control guarantees an optimal working climate. Warm feet – cool head: The hot water heater with (optional) floor heater even warms your feet on extremely cold days, whilst the air conditioning system fitted in the cab roof ensures a pleasant temperature in the cab when it's hot outside.

Well-designed cab – Quiet

Decoupling the cab and tractor body with conical bearings and optional cab suspension prevent vibrations and noise being transferred to the cab. The extremely well insulated cab and the water-cooled engine, which is extremely smooth-running at low engine speeds, ensure optimum noise reduction.



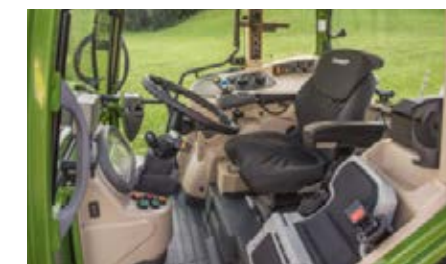
The decoupling of the tractor body and cab or cab suspension if preferred, brings comfort to the working day.



The Fendt 200 Vario provides a central cluster containing, e.g. power supply and signal socket for external implements.



Easy air conditioning and heater control, with floor heating as an option for winter.



Enjoy your work thanks to the customised control options.



The extensive glazing and narrow steering column provide an excellent view to implements at all times. The roof window provides ideal visibility for front loader work.

FENDT 200 VARIO: OPERATING CONCEPT

A true great makes it easy.

Variostick – Controlled to perfection

The key functions offered by the Fendt 200 Vario can be controlled with just one hand: The Variostick controls the tractor just as you need to for the work at hand. It is ergonomically placed on the right-hand console. With the Variostick, you can accelerate the tractor continuously between 0.02 km/h and 40 km/h.

Easy to operate and everything in view

The driver can find all key functions such as engine speed, cruise control speed, TMS, 4WD and differential lock automatic mode, on the control panel on the right-hand console. The driver can access additional information in the multi-display on the dashboard, e.g. the worked area, the time or the fuel consumption.

Fast direction changing

Just one click of a button on the reverse stick on the left of the steering wheel is all you need to change direction quickly and easily. The right hand remains free to control the hydraulics during front loader work or on headlands.

Stop&Go function in conjunction with TMS

With the Stop & Go function, drivers can slow the Fendt 200 Vario down to a stop by pressing and holding the switch on the reverser. When the switch is released, the tractor drives in the direction in which the switch was actuated. The Stop & Go function is especially useful if you need to increase the engine rpm in driving pedal mode, e.g. during front loader work or when tipping from a trailer.

Make work easy through good visibility. The glare-free backlit switches ensure safer working in the dark.



The steering wheel can always be set in the ideal position using the height and tilt adjustment.



The driving mode can be selected individually: The speed is controlled either by the driving pedal or Variostick.



FENDT 200 VARIO: VARIOTRONIC^{TI}

A true great finds the best way.



Variotronic^{TI}

Well thought-out to the last detail, but always with an eye on the big picture – all Fendt tractors offer you intuitive operation combined with functionality across all ranges. Pioneering technologies are also installed in the smallest Fendt tractors. The Fendt 200 Vario has a TIM guidance-ready interface which enables communication with an automated steering system via the ISOBUS standard.

Let someone else do the steering

The new Fendt 200 Varios come ready for automatic steering systems. Various options are available for track recognition with GPS receivers up to RTK accuracy. The preinstalled module includes the hydraulic steering valve and the required sensors, allowing you to focus on your implement.

VarioActive – Reverse in just one action

Steer quicker with the VarioActive steering system. With its introduction into 200 Vario, Fendt also offers the VarioActive steering system in the compact tractor class. With activated VarioActive steering, the number of steering wheel turns from full lock to full lock is halved. Using the superimposed steering system, a greater steering ratio can be activated by the touch of a button. It adapts to the steering movement and road speed, resulting in enhanced operating comfort, especially for front loader work in small farmyards or on headlands.

The guidance system enables maximum operating efficiency, as overlapping or damage to your crops is prevented.



The Fendt 200 Vario provides interfaces to guidance systems with GPS receivers to RTK accuracy.



Quick turn into the next track using the VarioActive superimposed steering system.



The VarioActive superimposed steering system allows you to achieve full steering lock with just one turn, which pays dividends when working with front loaders and in farmyards, and on headlands.



FENDT 200 VARIO: VEHICLE CONCEPT

A true great knows no boundaries.

Exceptional ride and operating comfort

The intelligent combination of three systems guarantees maximum ride and operating comfort: the self-levelling front axle suspension with anti-roll control, the cab suspension and the active shock load stabilising. The wasp-waist design ensures exceptional manoeuvrability and a 52° steering angle (depending on tyres). Its low vehicle weight guarantees that soil compaction is minimised during operation. The high stability of the Fendt 200 Vario results from the tractor's low centre of gravity. The optimum traction and constant power engagement of the Vario transmission allow you to work safely and without stress, even on slopes.

Front axle suspension

The front axle, which is pushed by the torque tube, detects uneven surfaces and transmits these findings to hydraulic cylinders. The oil displaced in the cylinders presses against the nitrogen reservoirs, where the shock loads are dampened. The integral automatic self-levelling with position sensor guarantees constant suspension comfort independent of load. Anti-roll control guarantees a high degree of stability and operating safety, especially when working with heavy implements on slopes.

The front axle suspension has a total suspension travel of 80 mm along with a 20° swing angle. Thanks to the level control, the suspension comfort and safety is always excellent regardless of the payload.



The 4WD and automatic differential lock is activated depending on the steering angle and speed. You can manually activate 4WD and differential lock in any situation at the touch of a button.



With a minimum vehicle height of 2,480 mm with 480/70R30 tyres, the compact Fendt 200 Vario is well-suited to being brought into low structures.

FENDT 200 VARIO: HYDRAULICS

A true great always has the right solution to any problem.

Powerful hydraulics

The hydraulic system on the Fendt 200 Vario has a high oil delivery capacity of 41 l/min as standard. Two hydraulic pumps (33 l/min + 41 l/min) each control the steering and working hydraulics separately. In the case of a high volume requirement, the two circuits can be added to give a maximum capacity of 74 l/min. The separated oil supplies for the hydraulics and gearbox prevent the oils from mixing, which is especially important if implements are changed frequently. The high oil volume of 34 litres also allows use of large skips.

Excellent hydraulic power

If there are high demands on the hydraulics, the Fendt 200 Vario can be fitted with a 71 l/min LS pump, so providing a total delivery capacity of up to 104 l/min with flow summation.

Power Beyond

Power Beyond is available in the back for operating heavy-duty hydraulic machines. Full hydraulic power is directly available without any unnecessary resistance. The large-diameter pressureless return has low resistance for slight heating and efficient operation.

Strong linkage

The optional front linkage has a maximum lift capacity of 2490 daN. Its rugged construction makes it suitable for all kinds of operations. The vibration damping prevents bounce and guarantees safe driving and comfort, even when carrying heavy loads. The electrohydraulic rear linkage with a maximum lift capacity of 4,204 daN guarantees that even the heaviest mounted implements can be lifted to their full extent.

Front power lift with swinging function on lower links. The lower link can be easily folded up for safe operation without front implements.



The crossgate lever controls the 1st and 2nd valves with great precision. The flow rates can be conveniently controlled on the two control valves.



Convenient electrohydraulic rear power lift control with active shock load stabilising system.



2-line air brake, 4 EHS valves and Power Beyond. All connections can be accessed safely and conveniently despite the machine's compact nature.



External control for linkage and rear PTO engagement. Mount rear implements easily and save yourself unnecessary steps, for example, when filling the slurry tank.



All connections in the rear mount are permanently labelled and clearly arranged. The self-closing valve flaps prevent ingress of dirt.

FENDT 200 VARIO: FENDT CARGO FRONT LOADER

True greats do great things together.

Front loader to Fendt standards

The Cargo 3X65 front loader is specially designed for the Fendt Vario 200. The “Made by Fendt” philosophy also applies to the front loader: The Fendt Cargo 3X65 front loader is developed in-house as the ideal companion to the Fendt 200 Vario. The Fendt 200 Vario and Fendt Cargo 3X65 form the perfect unit. From the start, all dimensions and power of the Cargo have been explicitly designed to match the compact Fendt 200 Vario. This ensures exceptional visibility with a balanced force and load distribution. All maintenance work can be carried out on the mounted front loader without anything getting in the way. All these benefits provide you with the ultimate in operating safety.

Operation made easy

The front loader can be conveniently controlled by the electrical crossgate lever. Your left hand remains free for steering and reversing. You control the speed with your foot. The VarioActive superimposed steering system gives the Fendt 200 Vario unrivalled agility.

Cargo-Lock

With the Fendt Cargo Lock, you can mount and remove the Cargo front loader from your Fendt 200 Vario even quicker and easier. Thanks to the semi-automatic lock, you no longer need to insert locking bolts, which is often difficult and heavy work. The system also offers optimum operating safety immediately after driving into it.

Optimised front loader suspension

The Fendt Cargo front loader has an optimised damping system. Gas accumulators absorb vibrations and jolts. The damping system is tailored for maximum comfort in combination with the front axle and cab suspension. This system reliably protects both people and material.

The multi-coupler couples the electrical and hydraulic lines in just one movement. Despite its compact size, the Fendt Cargo 3X65 offers good lift heights and load widths.



The electrical crossgate lever controls the front loader with extreme precision. The 3rd and 4th control circuit can be operated without changing hands by using the push buttons on the crossgate lever.



The streamlined bonnet design gives you a clear view of your tool. The standard roof window gives you an excellent overhead view



A lever on the quick-attach frame conveniently unlocks the tool with one turn. During mounting, the tool automatically locks when fully tilted.



Mounting or detaching can be done in minutes with the Fendt Cargo Lock. The support stands can be unlocked without tools. The cargo is always stable and secure.

FENDT SERVICES

Rest assured that your machine will be ready for action tomorrow.



100% quality, 100% service Fendt Services
To ensure that your Fendt Vario delivers 100 percent performance at all times, we offer you 100 percent service. In addition to the best diagnostics capability and ease of repair, this includes availability of replacement parts 24/7 during the harvesting season. The Fendt service network also guarantees fast lines of communication between you and our trained service employees. Fendt original parts and their fitment come with a 12-month warranty. Repairs using original parts ensures your Fendt tractor retains its value.

Performance and profitability under contract
The Fendt Service packages give you complete cost control with exceptional service. The packages cover all specified maintenance work, based on attractive fixed rates. The various Fendt Care levels include regular maintenance and servicing combined with an extended warranty for up to 8,000 operating hours or 8 years in total. From the maintenance agreement to the comprehensive package including replacement machine, you'll find a flexible and tailored solution for your fleet at Fendt.

Individual finance and rental models
Investing in technology means a considerable capital outlay. A credit finance agreement from AGCO Finance offers attractive conditions and flexible terms. From the initial down payment to monthly instalments to the payment term – you set the general terms on which to finance your Fendt. If you need additional capacity in a hurry or want to use tractors over a long-term period without purchasing them, your Fendt dealer can offer the ideal solution with tailored rental packages. These packages help you adapt your fleet to your current workload.

Fendt Expert operator training
Fendt brings you not only the latest technology, but also helps you get maximum value from your vehicle. With the help of the exclusive operator training programme, you can optimise the efficiency of your Fendt even further, and get to know all the functions which make your daily routine that much easier. Our team of professional trainers will advise you on how to use the full potential of your Fendt vehicle.



Max. hours	8,000
Max. years	1 + 7
Cover (except wear)	Full cover

Fendt has set new extended warranty premiums to offer an even more comprehensive product to cover the reliability and repair risk of new machines.

Using the smartphone “AGCO Parts Books to go”, you can find Fendt spare parts quickly and easily and order them directly. The app is available for download in the app store or in Google Play Store. Your personal access data is available from your Fendt dealer.



Your Fendt dealers are always there when you need them, and have just one aim – to make sure your Fendt machines are ready for action at any time. If something does go wrong during harvest time, simply call your certified service centre 24/7 on the emergency hotline.

Fendt Care packages	Bronze	Silver	Gold	Platinum ¹
Coverage	Regular maintenance, fixed maintenance costs	Cover against repair risk (except wear and tear)	All costs covered (except wear and tear)	Covers all costs and guarantees availability (except wear and tear)
Machine type	All	All	Wheeled tractors	Wheeled tractors
Regular maintenance	✓	✓	✓	✓
Repair risk		✓	✓	✓
Excess		Optional excess: €0, €190, €490	€0	€0
Travel Rates			✓	✓
Recovery and towing			✓	✓
Vehicle diagnostics			✓	✓
Fitting of exhaust brake			✓	✓
Oil, filters for engine and gearbox repair			✓	✓
After hours and weekend surcharge				✓
Replacement machine				✓

¹ Valid in Germany, Great Britain and France. Platinum only available at participating dealers.

In order to keep your machine ready for action at any time, we offer a tailored maintenance and repair service beyond the statutory warranty. Fendt ProService offers you flexible policy periods depending on the machine type, and flexible premiums with and without excess. This gives you complete cost control, planning certainty and retains the value of your machine.

Equipment variants.

Reversible fan	<input type="checkbox"/>
Preheater unit (engine, transmission oil)	<input type="checkbox"/>

Vario TMS - Tractor Management System	<input type="checkbox"/>
Shuttle function, stop-and-go function	<input type="checkbox"/>
Cruise control	<input checked="" type="checkbox"/>
Acoustic signal when reversing	<input type="checkbox"/>

Variostick control	<input checked="" type="checkbox"/>
ready for automatic steering system	<input type="checkbox"/>
VarioActive steering	<input type="checkbox"/>

Comfort cab	<input checked="" type="checkbox"/>
Active charcoal filter	<input type="checkbox"/>
Mechanical cab suspension	<input type="checkbox"/>
Comfort seat, air sprung	<input checked="" type="checkbox"/>
Instructor seat	<input checked="" type="checkbox"/>
Heating with 3-step fans	<input checked="" type="checkbox"/>
Air-conditioning	<input type="checkbox"/>
Integrated automatic climate control	<input type="checkbox"/>
Hinged front/rear windows	<input checked="" type="checkbox"/>
Rear window wash/wipe	<input type="checkbox"/>
Telescoping rear view mirror	<input checked="" type="checkbox"/>
Auxiliary device holder	<input type="checkbox"/>
Radio CD MP3	<input type="checkbox"/>
Radio CD MP3 hands-free speaking system	<input type="checkbox"/>
Brake level device	<input type="checkbox"/>
Electric battery disconnect switch	<input type="checkbox"/>
Roof window, hinged, with roller shade	<input checked="" type="checkbox"/>

Auxiliary lights front	<input type="checkbox"/>
Rear working lights	<input checked="" type="checkbox"/>
Work lights A-pillar	<input type="checkbox"/>
A-pillar LED work lights	<input type="checkbox"/>
Roof rear LED work lights	<input type="checkbox"/>
Rotating beacons	<input type="checkbox"/>

Front axle suspension self-levelling, lockable	<input type="checkbox"/>
Compressed air system 1-/2- circuit system	<input type="checkbox"/>

Automatic front differential lock	■
Comfort engagement controls for 4WD / differential locks	■

Tractive power and stepless mixed control	■
Clearance, position control	■
Front power lift	□
Externally controlled rear power lift	■

Front: 540E rpm	<input type="checkbox"/>
Front: 1000 rpm	<input type="checkbox"/>
Rear PTO 540/WZW/1000 rpm	<input type="checkbox"/>
Rear PTO 540/540E/1000 rpm	<input checked="" type="checkbox"/>
External controls for rear PTO	<input checked="" type="checkbox"/>
PTO comfort control, electrohydr. preselection	<input checked="" type="checkbox"/>

EHS valve actuation mechanical crossgate lever	■
Hydraulic tandem pump, hydraulic oil cooler (42+ 33 l/min)	■
Load sensing system with axial piston pump (33+71 l/min)	□
1st and 2nd EHS valve at rear	■
1. EHS valve middle and rear	■
3. EHS valve middle and rear	□
3. EHS valve at rear	□
4. EHS valve at rear	□
Hydraulic power beyond connection	□
Return middle right	■
Return rear	■

Manual hitch	<input checked="" type="checkbox"/>
Automatic trailer hitch with remote control, rear	<input type="checkbox"/>
Ball coupling, height adjustable	<input type="checkbox"/>
Hitch	<input type="checkbox"/>
Drawbar	<input type="checkbox"/>
Piton-fix	<input type="checkbox"/>
Front weights, various sizes	<input type="checkbox"/>
Wheel weights, rear wheels	<input type="checkbox"/>
Pivoting front wheel mudguard	<input type="checkbox"/>

Front loader attachment parts	<input type="checkbox"/>
Front loader Cargo 3X/65	<input type="checkbox"/>



Technical Specifications.

Rated power ECE R 120	kW/hp	53/72	60/81	67/91	73/99	74/101
Maximum power ECE R 120	kW/hp	57/77	63/86	71/96	77/104	82/111
No. of cylinders	Number	3	3	3	3	3
Cylinder bore/stroke	mm	108/120	108/120	108/120	108/120	108/120
Cubic capacity	cm ³	3300	3300	3300	3300	3300
Rated speed	rpm	2100	2100	2100	2100	2100
Max. torque at 1600 rpm	Nm	306	348	389	422	463
Torque rise	%	28.0	28.0	28.0	27.0	37.0
Fuel level	litres	125.0	125.0	125.0	125.0	125.0

Transmission type		ML75	ML75	ML75	ML75	ML75
Speed range forward	km/h	0.02-40	0.02-40	0.02-40	0.02-40	0.02-40
Speed range reverse	km/h	0.02-25	0.02-25	0.02-25	0.02-25	0.02-25
Top speed	km/h	40	40	40	40	40
Rear PTO		540 / 540E / 1000	540 / 540E / 1000	540 / 540E / 1000	540 / 540E / 1000	540 / 540E / 1000
Rear PTO optional (including ground speed PTO)		540/1000/3,8	540/1000/3,8	540/1000/3,8	540/1000/3,8	540/1000/3,8
Front PTO option		1000	1000	1000	1000	1000
Front PTO option 2		540 E	540E	540E	540E	540E

Dual hydraulic pump	l/min	33+42	33+42	35+41	33+42	33+42
Variable flow pump	l/min	33+71	33+71	33+71	33+71	33+71
Working pressure / control pressure	bar	200	200	200	200	200
Max. valves (front/centre/rear)	Number	0/2/4	0/2/4	0/2/4	0/2/4	0/2/4
Max. available hydraulic oil volume	litres	34	34	34	34	34
Max. lift capacity of rear power lift	daN	4204	4204	4204	4204	4204
Max. lift capacity of front power lift	daN	2540	2540	2540	2540	2540

Front tyres (standard)		320/70R24	320/70R24	380/70R24	380/70R24	440/65R24
Standard tyres rear		420/85R30	480/70R30	480/70R34	480/70R34	540/65R34
1. Optional front tyres		320/70R24	320/70R24	320/70R24	13.6R24	13.6R24
1. Optional rear tyres		480/70R30	420/85R30	420/85R30	13.6R38	13.6R38
2. Optional front tyres		380/70R24	380/70R24	320/70R24	320/70R24	320/70R24
2. Optional rear tyres		480/70R34	480/70R34	480/70R30	480/70R30	480/70R30
3. Optional front tyres		440/65R24	440/65R24	440/65R24	440/65R24	380/70R24
3. Optional rear tyres		540/65R34	540/65R34	540/65R34	540/65R34	480/70R34

Front track width (standard tyres)	mm	1500	1500	1690	1690	1690
Rear track width (standard tyres)	mm	1510	1660	1660	1660	1660
Overall width with standard tyres	mm	1970	2170	2170	2170	2186
Overall length	mm	4068	4068	4068	4068	4068
Overall height - comfort cab	mm	2480	2480	2530	2530	2530
Max. ground clearance	mm	475	475	475	475	475
Wheelbase	mm	2319	2319	2319	2319	2319

Unladen weight (base tractor with cab - full tanks, without driver)	kg	3830.0	3870.0	3950.0	3950.0	4010.0
Max. permissible overall weight	kg	7000.0	7000.0	7000.0	7000.0	7000.0
Max. trailer hitch load	kg	2000.0	2000.0	2000.0	2000.0	2000.0

FENDT

Leaders drive Fendt!



www.fendt.com

AGCO GmbH – Fendt Marketing
87616 Marktoberdorf, Germany

 **AGCO**
Your Agriculture Company

Fendt is a worldwide brand of AGCO.
All details regarding scope of delivery, appearance, performance, dimensions and weights, fuel consumption and running costs of vehicles reflect the latest information available at the time of print. These may change by the time of purchase. Your Fendt dealer will be happy to inform you about any changes. The vehicles shown do not feature country-specific equipment.