



FENDT

Fendt Katana





Fendt Katana.

- 4 At a glance.
- 6 Spotlights.
- 10 Crop flow.
- 16 Engine.
- 22 Ground drive.
- 26 Cab.
- 30 Smart Farming.
- 36 Attachments.
- 40 Fendt Services.
- 46 Equipment variants and technical details.



At a glance.

The power of precision.
Chopping is always about performance. Performing especially well. With results which are qualitatively and quantitatively convincing. We are also about versatility. We want optimum performance and maximum efficiency – no matter what the application. Are you wondering how you can achieve this goal? The answer is the Fendt Katana.

- High-throughput crop flow: Fendt CropFlow 2.0
- Powerful roller cracker Fendt R & RS Cracker
- Outstanding grain and plant pick-up at up to 30 mm cut length
- Corn header with eight, ten or twelve rows as desired
- StalkBuster corn attachment with integrated corn stubble mulcher
- Varioterminal 10.4", optionally with VarioGuide and VarioDoc Pro
- Variotronic equipment control (optional), for example to visualise an ISOBUS-compatible NIR sensor in the varioterminal
- Loading height of up to 6.2 m
- 6-cylinder in-line engine (Katana 650 with 650 hp, Katana 850 with 847 hp)
- Emission level 5
- Automatic load limit control
- Innovative knife sharpening unit with continuous adjustment of the grinding stone during sharpening
- Fendt BalancedGrip intelligently regulated four-wheel drive concept on request
- Unique in forage harvesters: Variable fan with reversing function

Engine		Katana 650	Katana 850
Engine horsepower (ECE R 120)	kW/hp	478/650	623/847



Fendt Katana Spotlights.

Here you will find the special Fendt solutions, which make all the difference too you and make your work day much better.



3.

1. ISOBUS

- Varioterminal 10.4" is equipped with ISOBUS implement control

2. Driver seat

- Noise reduction of -3 dB at the driver's ear

3. Attachment

- 460^{Plus} StalkBuster

4. Fendt CropFlow 2.0

- Roller cracker
- Pendulum frame
- Discharge chute
- Chopping drum
- Discharge fan

5. Fendt BalancedGrip

- Intelligently controlled all-wheel drive

6. Reversible fan

- Variable fan blades with reversing function

7. Motors

- Longitudinally mounted, smooth-running, in-line 6-cylinder engines with compact size, low centre of gravity and high fuel efficiency

8. Innovative knife sharpening unit

- Continuous readjustment of the grinding stone





14.

9. Variotronic with numerous assistants

- VarioGuide track guidance with Contour Assistant
- VarioDoc Pro with yield measurement

10. Modular tank concept

- Optional additive tank with 215 litres
- Up to 1,225 l diesel for the Katana 650 and 1,430 l for the Katana 850

11. Extra large tyres

- Extra large tyres up to 900/65R38
- Extra high tyres 710/70R42

12. All-wheel rear axle suspension

- All-wheel drive rear axle suspension as standard
- Optional suspension all-wheel drive axle with 13% increased torque

13. Load limit control for maximum harvesting performance

- Optimum engine utilisation for maximum harvesting performance
- Perfect adjustment of the speed, depending on the crop density

14. Varioterminal (Touch/Button/Rotary wheel)

- Setting the machine via the 10.4" terminal

15. ECO/ POWER concept for maximum economy

- Reduction of engine speed with constant speed of the chopping units for applications with lower power requirements
- Highest fuel efficiency

16. LED lighting option

- LED working lights
- LED maintenance lighting





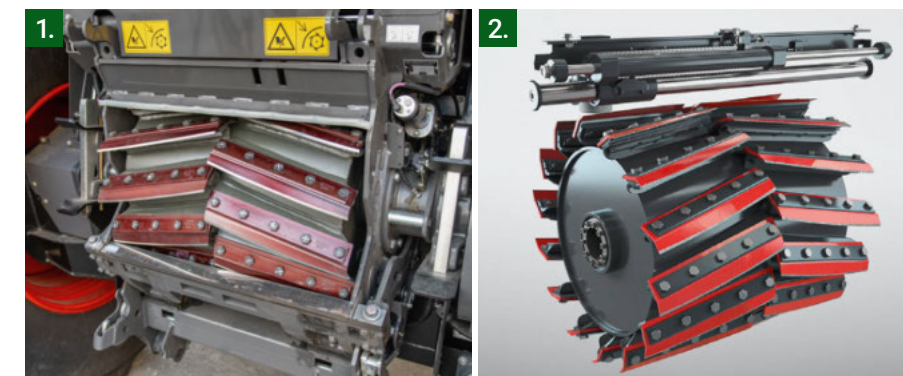
Crop flow.

Designed for high throughputs and the best quality – the Fendt CropFlow 2.0. With the largest chaff drum on the market and powerful roller crackers, the crop flow always ensures an optimal result under a variety of conditions.



1. Chopping drum

- Largest knife drum on the market with 720 mm diameter
- High flywheel mass for smooth running
- High cutting frequency of 16,100 cuts/min (28 knives)
- Width of the chopping drum: 800 mm
- Knives in V-shaped arrangement
- 1,150 rpm drum speed
- Innovative knife sharpening unit with continuous adjustment of the grinding stone during sharpening
- Wear-free, hydraulic drum brake

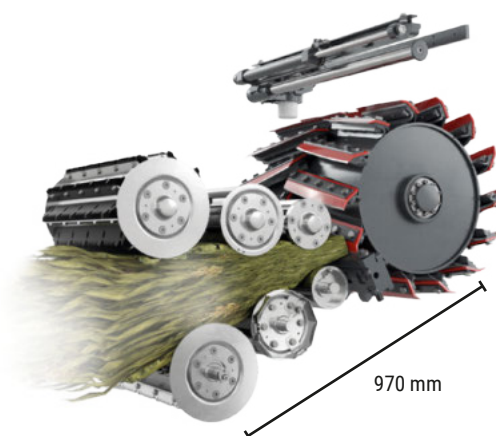


Intake

- 6 pre-press rollers with 770 mm width for the intake of high material quantities
- Stepless hydrostatic drive of the pre-press rollers
- Large distance from metal detector to drum (970 mm)
- Sensitivity of the metal detector is adjustable in 6 steps via the terminal
- Terminal shows the position of the foreign body
- Activation of the detector triggers a warning signal to inform escort vehicles (can be activated via terminal)
- Additional foreign object detection is available as an option



- + Optimum crop compaction and feeding to the chopping drum through 6 pre-press rollers
- + Optimum harvest quality with low over-length forage and give good compensation for uneven swaths
- + Convenient, steplessly variable adjustment of the cutting length from 2.6 - 42 mm (depending on drum) from the driver's seat
- + Timely detection and sufficient stopping time when the metal detector responds



2. Innovative knife sharpening unit

- Development of a grinding process for uniform grinding and thus exact material removal over the entire drum width
- The lateral grinding stone adjustment next to the drum developed into a continuous adjustment during the grinding process
- Constant distance to the Shear-bar over the entire drum width

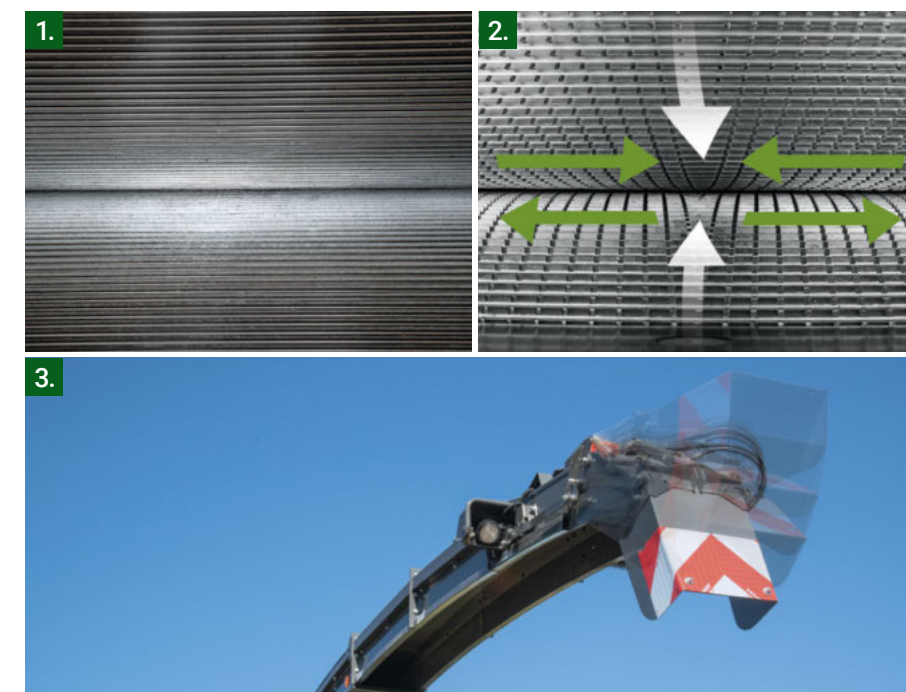


- + Knife geometry remains intact – increased service life
- + Uniform material abrasion
- + Consistent adherence to the desired cutting length
- + Improved forage quality through reduction of excess lengths in the edge area of the drum



1. Roller cracker – R-Cracker

- The R-Cracker has an aggressive and highly effective sawtooth profile for grain and crop preparation
- 300 mm roller diameter for even larger processing area
- 30 % or 40 % speed difference
- 148 saw teeth on both rollers
- Reliable preparation of the grains (depending on conditions) with cutting lengths from **3 mm to approx. 20 mm**
- R-Cracker is ideal for standard cutting lengths



Roller cracker

- 300 mm roller diameter achieves a larger preparation area compared to conventional rollers
- Aggressively designed surface structure and large contact area of the crop to the rollers extends the processing area
 - Achievement of extremely long service lives of the rollers due to enlarged surfaces and consequently low wear and tear
- Hardened and chromed roller surface
- HORNING as a specialised roller supplier with many years of experience



- + Grains, plant and leaf parts are intensively processed by the saw tooth profile
- + Improved crop intake
- + High throughputs
- + Long service life
- + Best chopping quality and economy

2. Roller Cracker– RS–cracker

- The RS-Cracker has an aggressive and highly effective saw-tooth profile with additional V-spiral groove for grain and crop preparation
 - Sawtooth profile with V-spiral groove leads to improved fraying for longer cutting lengths
- V-spiral groove ensures a high force effect on the chopped material
 - Additional force effect of the V-spiral groove leads to a very high longitudinal and transverse locking effect

Discharge chute

- New, even longer discharge chute
- Shape and cross-section have been adapted to higher throughputs
 - Has a larger cross section
 - Larger service openings on the transfer channel and discharge chute for better accessibility

3. Discharge chute – Fill Control

- Automatic control of the discharge chute flap
- Opening angle of the flap is automatically adjusted depending on the position and angle of the discharge chute
- Flap compensates for the swivel radius of the discharge chute
- Automatic deactivation of the function during chopping



- + Targeted transfer of the crop to the transport vehicle
- + Swing angle of 210°
- + Clear view of the loading process due to wide swivel angle
- + Optimally bundled crop flow
- + Higher throughputs





Engine.

Compact and powerful with extraordinary versatility – the series 6-cylinder engines of the Fendt Katana will win you over with outstanding and efficient performance in full and part-load operations.



1.

1. Concept Katana 650

- MTU in-line 6-cylinder
- 15.6 l capacity
- 478 kW / 650 hp
- Emission level 5
- Maximum torque of 3,100 Nm
- Exhaust gas after treatment via cooled exhaust gas recirculation, SCR and particulate filter
- Engine specially designed for chopper use for maximum throughputs
- Chopper characteristics
- Maximum efficiency: turbo compound technology for extra power without extra consumption



- + High performance for maximum throughputs
- + High fuel efficiency in full and partial load operation
- + 100,000-times proven engine in on- & off-road applications
- + Excellent service coverage and spare parts supply
- + R6-typical smooth running
- + Low installation at the rear for best weight distribution

2. Concept Katana 850

- Liebherr D976
- 18 l capacity
- Most powerful in-line 6-cylinder on the market
- 623 kW / 847 hp
- Exhaust gas stage 5
- Maximum torque of 3,651 Nm*
- Exhaust gas after treatment SCR only

*Data of the manufacturer



- + Versatile performance: High throughput in full-load operation and efficient in partial-load operation
- + Low maintenance and servicing costs per hp output
- + Excellent service coverage and spare parts supply
- + R6-typical smooth running
- + Very good weight-performance ratio
- + Low installation at the rear for best weight distribution

2.





1.

1. Accessibility

- Parallelogram opening Side flaps
- Tool-free removable mudguards
- Large maintenance platform between radiator and chopper unit
- Swing-out access ladder
- Setting the maintenance intervals of the central lubrication via Varioterminal



- + Benchmark maintainability
- + Excellent accessibility to engine, hydraulic components and cooling system
- + Easy access to air filters
- + Service also possible in confined spaces (e.g. workshop)
- + Quick and easy daily maintenance

Modular tank concept

- Depth, central mounting position
- Robust plastic tanks
- Choice of diesel only or combination of diesel and water/additive tank
 - Only diesel for very long operations
 - Water/additive solution completely integrated into the vehicle

2. Compressed air system.

- Standard compressed air supply system
- Quick coupling connections with good accessibility
- 3 connections distributed over the entire machine:
 - At the rear left under the tailgate
 - In the maintenance area
 - Front left under headlights

3. Reversible fan

- Variable fan with reversing function
- Pneumatic adjustment of the fan blades in the range between 5° - 38°
- In conjunction with the engine control system, only as much air is drawn in as is actually needed
- 13 % higher fan speed compared to the standard fan (1,715 vs. 1,524 rpm)
- Highest efficiency: usable additional power for chopping operation of up to 20kW
- Manufacturers Cleanfix/Hägele



- + Extremely good access
- + Easy coupling and uncoupling
- + Predestined for quick and easy daily cleaning
- + Cleaning can be done directly on the field

4. ECO mode

- Optimal solution for applications with lower power requirements, e.g. grass chopping
- Reduction of the engine speed – lower fuel consumption with constant speed of the chopping units

POWER mode

- Mode for full power at maximum engine speed





Ground drive.

With high throughput and gentle on all terrain – the Fendt Katana also leaves nothing to be desired when driving. Thanks to intelligently regulated all-wheel drive and high manoeuvrability, hilly terrain and difficult conditions are also child's play.



1. Standard all-wheel drive with increased torque

- Due to the increased torque of up to 12.5 %, the tractive force can be increased compared to the standard drive
- Option also has a reinforced hoist and brakes
- Increased traction, even in very hilly terrain and wet conditions
- Recommended especially for demanding terrain (topography, difficult to navigate)
- Required in conjunction with the Kemper 490 chopper attachment



- + Increased traction and pulling power
- + Increased traction



Rear axle – Suspension

- Active hydraulic suspension with locking function
- Suspension travel of 90 mm
- Suspension can be lowered and raised manually
- Convenient control from cabin
- 10.5 t maximum rear axle load
- Dependencies of the maximum load capacity:
 - Tyre or rim load index
 - Speed and tyre pressure
- Compact design and small turning radius

2. Balance Grip

- As an option, the Katana all-wheel drives are equipped with the Fendt Balance Grip assistance system
- Intelligently controlled all-wheel drive concept
- Drive torques of the individual hydraulic motors are actively controlled (Torque Distribution)
- Balance Grip can be updated for all Katanas from 2011 onwards
- Measures weight shift on slope through gyroscope
- Weight shift is detected
- The drive torque distribution between the right and left front wheel and the rear axle is dynamically adjusted
- Predestined for use with the pick-up in hilly terrain
- Balance Grip can be switched off and on in the terminal (Torque Distribution OFF/ON)



- + Prevents wheel slip, especially on hilly terrain
- + Provides more secure grip in difficult conditions

All-wheel drive without Balance Grip



Fendt Balance Grip





Cab.

The Fendt Katana has everything you need. A comfortable, air-sprung seat, an optimal view on all sides and ergonomically arranged and intuitive controls. This will make the cab your favourite place, from where you'll have everything under control.



1. Driver seat

- New windows with noise-reducing effect
 - New front and rear windows with noise-reducing films
 - Noise level is reduced by - 3 dB at the driver's ear
- Generous space
- Sophisticated lighting concept
- Comfort seat and comfort passenger seat
- Variotronic operating concept
- Generous windows for optimum views of working area



- + Significant noise reduction brings even more pleasant working atmosphere due to low noise level
- + Perfect overview
- + Familiar operating logic thanks to uniform driver's platform with armrest and Variotronic as in the tractor

2. Operation

- Familiar Fendt armrest
- Varioterminal with touch and key operation
- Specially developed multifunction joystick with ergonomic hand rest
- 3 freely assignable buttons for e.g. automatic discharge chute swivelling or VarioGuide activation
- Auxiliary unit holder across the entire window width on the right-hand side

Throughput and yield measurement

- Throughput and yield recording via deflection of the pre-press rollers as an option
- Harvested fresh mass in t
- Throughput capacity in t/h or t/ha
- Simple calibration through a calibration weighing on the weighbridge
- Throughput or yield values can be managed in both VarioDoc and VarioDoc Pro
- Yield mapping possible with additional equipment (e.g. via field plot index)



3. Lighting

- Extensive lighting system for the best overview
- Easy operation via centrally arranged and self-explanatory membrane-covered push-buttons
- Lighting concept for optimal adaptation to working conditions
- Coming home function
- LED working lights
- LED maintenance room lighting



- + Best illumination for high safety and optimum working even at night
- + Very simple and clear lighting operation on the membrane-covered keypad



SmartFarming.

The Fendt Katana is much more than just iron and steel. With intelligent technological solutions your chaff attachment will become an experience and your work a success!



1.



2.



VarioDoc as standard equipment.

- Standard Varioterminal 10.4" includes VarioDoc
- 10 different on-board computers included
- Simple recording of the most important parameters
 - Fuel consumption
 - Surface processed
 - Area output
 - Etc.
- Allocate recorded parameters to different jobs
- Wireless transfer of data via USB stick and Bluetooth to PC



- + Clean documentation of the important parameters for billing
- + Overview of work progress and order status at all times
- + Less effort for data input on the PC due to direct data transfer from the Varioterminal

VarioDoc Pro - Agronomy Module

- Prerequisite for the use of VarioDoc Pro is the "Track Guidance Basic Package"
- VarioDoc Pro records additional parameters compared to the standard VarioDoc
- Additional storage of location data
- Data exchange of field and yield data via:
 - Mobile radio
 - USB stick
 - Bluetooth

1. ISOBUS - Machine control module

- Varioterminal 10.4" is available with Variotronic implement control (ISOBUS) on request
- "Machine control basic package" contains the Variotronic unit control system
- Use of the full range of functions of the Universal Terminal (UT)
- It is possible to completely integrate ISOBUS-capable sensors or additional devices into the operating concept

2. Application example – Measuring ingredients in the crop via an NIR sensor with ISOBUS connection

- NIR sensor available via ITPhotonics
- Operation via ISOBUS in the Katana Varioterminal
- Determined ingredients of the crop are visualised directly in the Varioterminal
- Installation and adjustment by specialist company
- Yield measurement works even more accurately



- + Operation of all ISOBUS devices via one terminal
- + Simple and intuitive operation
- + Clear representation of the ISOBUS devices



VarioGuide - Track guidance module

- Satellite-based track guidance
- Suitable for use in maize, grass as well as GPS
- Precise work
- Supports known satellite systems
- Different track lines possible



Always up to date

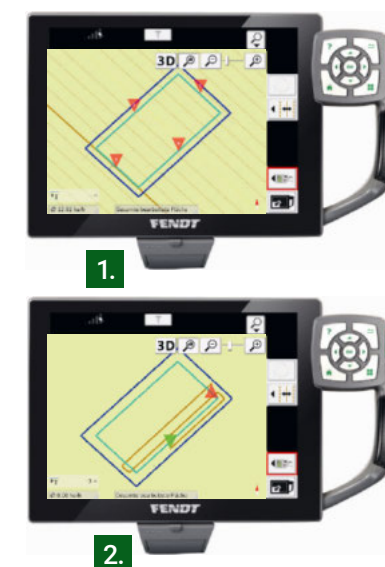
- Particularly advantageous for Fendt Katana customers: Retrofit option for important software features to the latest model year in each case
- Updateability makes new features accessible even to customers with existing machines
- With almost every update, Fendt Katana customers have new, powerful features in the Variotronic and VarioGuide range that offer important added value in the areas of ergonomics, efficiency and value retention
- A Katana forage harvester from 2012 thus has almost the same Variotronic features as a new machine in 2020
- No other manufacturer offers comparable added performance and exclusive, proactive value retention, even after purchase

1. VarioGuide Contour Assistant - Track Guidance Module

- The VarioGuide Contour Assistant supplements the familiar track line types with the track lines "contour segments" and "single track"
- "Contour segments" mode
 - Creation of path lines based on field boundaries provided e.g. via field data management
 - Adding, merging and deleting of path lines possible through on-board contour segment management
 - Sharing of contour segments between two machines (which have the contour assistant enabled) possible
 - Data transfer, for example via USB stick

2. "Single track" mode

- "Single track" mode is part of the VarioGuide Contour Assistant package
- Ability to record the entire track as a single track line and transmit it to other vehicles. Both machines require the VarioGuide Contour Assistant to be activated
- For example, the Katana can automatically follow the recorded path of a Fendt Vario. Only one activation of the VarioGuide Contour Assistant for both machines is required.
- Data transfer, for example via USB stick





Attachments.

The right attachment for every use! Whether it's maize, grass or whole crop silage – there's an attachment for every need for the Fendt Katana which does first-class work. That's important, because quality starts from the very beginning.



460^{plus} StalkBuster maize attachment with integrated maize stubble mulcher

- Attachment with 8 integrated stubble beaters
- Combined method of harvesting and mulching in one operation
- 4 large intake drums with Ø 1.46 m: 8 maize rows with 75 cm row spacing
- The row button is part of the standard equipment
- Manufacturer Harvest header: KEMPER

Small and large intake drums

Small drums for normal maize crops and GPS

8 rows / 6 metres



360^{plus}

10 rows / 7.5 metres



375^{plus}

12 rows / 9 metres



390^{plus}

Large drums for high and high-yielding maize stands and GPS



460^{plus}



460^{plus} StalkBuster



475^{plus}



490^{plus}



Pick-Up P 3003 Maximum

- Working and transport width of 3 m
- Jockey wheels can be folded hydraulically into the various positions
- Wheels can be rotated 360° for best contour guidance, even when cornering
- Additional jockey wheel in the middle for best ground hugging and tine protection
- Reinforced tines and drive components
- Manufacturer Pick-Up: KEMPER



Direct cutting unit - Capello

- Capello Spartan direct cutting unit
- 5.1 to 6.9 m working width
- Harvesting biomass with minimum dirt content for the best silages
- Clean, deep cut without loss of heads/leaves – even in lying stands and difficult conditions
- Universal use in a wide variety of crops: cereals, grass, clover, lucerne, sunflowers, millet/sorghum, etc.
- Robust construction



Direct cutting unit - Zürn

- PROFI CUT 530 and PROFI CUT 700
- 5.3 to 7.0 m working width
- Excellent cutting pattern, low mass and head losses and safe pick-up of stored crops through low cutting
- Uniform feed of the crop to the pre-press rollers for a high chop quality with low overlengths
- Universal use in a wide variety of crops: cereals, grass, clover, lucerne, sunflowers, millet/sorghum, etc.



Fendt Services.

A Fendt machine is a high-tech product for the highest of demands. Accordingly, the certified Fendt sales partners offer first-class service.



+44 330 123 9909

You can reach the certified service partners around the clock via the Fendt Customer Hotline





The best product under the best protective shield

Extraordinary service partners and service:

- A short distance between our trained service employees and you
- 24/7 Replacement parts availability during the season
- 12 month guarantee on Fendt original parts and installation

100% quality. 100 % Service: Fendt Services

- Fendt Demonstration Service
- Fendt Expert Driver Training
- AGCO Finance - Financing and Leasing Offers
- Fendt Care – Service contracts and warranty extension
- Fendt Certified – Used machine programme

Ensure the operation of tomorrow today.

Fendt Demonstration Service

- Get on and try it out, instead of just talking about it
- Basis for an optimal decision-making process

Fendt Expert Driver Training

- Exclusive practical training with professional trainers
- Optimization of efficiency by learning all of the functions and exploiting the entire performance potential of the Fendt machine

Individual financing and leasing models

- Credit financing by AGCO Finance with attractive conditions, flexible terms and planable costs
- Tailored leasing offers via the Fendt sales partner



Fendt Certified – Used machine programme

Used agricultural machines with proven high-quality and certified Fendt quality

Advantages:

- Certification according to demanding quality standards
- Extensive initial check (technology, wear, appearance)
- Meticulous maintenance of wearing parts
- replacement, cleaning and painting of components as needed
- Warranty included

Fendt Care – Service contracts and warranty extension

- Tailored maintenance and repair service that goes beyond the legal warranty
- Maximum operational safety
- Flexible terms and rates with and without deductible
- Full cost control and planning security
- Only original parts used with guaranteed production quality and tested for functional reliability for optimal value retention of the Fendt machine



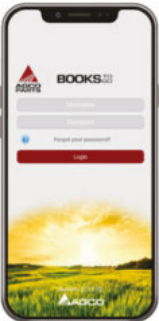
Fendt Care.

Cost control and planning security with the FendtCare rates

- Comprehensive range of services to ensure operational safety and the risk of repairs on new machines
- Full cost control with the best service
- Tailored solution for the fleet from maintenance contract to complete worry-free package including replacement machine

Smartphone-App “AGCO Parts Books to go”

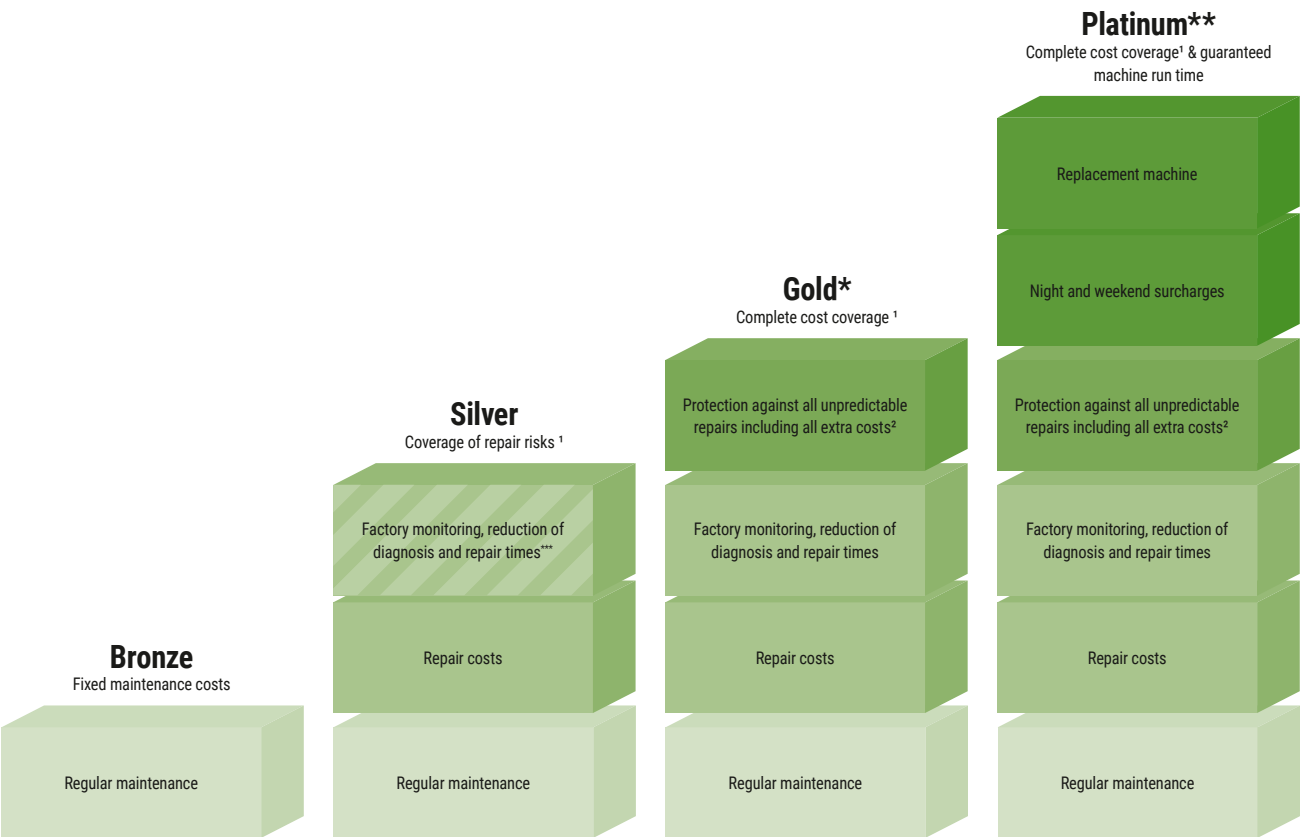
- Find replacement parts quickly and order directly
- Download via the App Store or the Google Play Store
- Access data via the Fendt sales partner




App Store



Google Play Store



	Cost advantages with Fendt Connect (optional)		Only for tractors with Fendt Connect	
	Complete Fendt Portfolio	Complete Fendt Portfolio	Wheeled tractor with Fendt Connect & telescopic loader ⁸	Wheeled tractor with Fendt Connect
Available for	Complete Fendt Portfolio	Complete Fendt Portfolio	Wheeled tractor with Fendt Connect & telescopic loader ⁸	Wheeled tractor with Fendt Connect
Customer benefit (deductible)	Operation safety of the machine	Coverage of large-scale damage ³ (490 €) Comprehensive coverage at attractive rates (190 €) Complete coverage with full cost control (0 €)	Complete coverage with full cost control including all extra costs (0 €)	Complete coverage with full cost control including all extra costs & guaranteed machine run time (0 €)
Maximum coverage				
Warranty extension	8 Years / 8,000 OH	5 Years / 3,000 OH	5 Years / 5,000 OH	3 years / 2,000 OH ⁴ 3 years / 4,000 OH ⁵ 3 years / 25,000 bales ⁶ 5 Years / 50,000 Bales 8 Years / 4,000 pump-H 5 Years / 8,000 OH 5 years / 750 OH ⁷

OH = operating hours; H = hours; ¹ excluding wear and tear; ² travel costs, recovery / towing, troubleshooting with additional diagnostic tools, use of dynamometer, oils and filters if engine / transmission is repaired; ³ only available for machines with self-propelled & RG300 & Momentum; ⁴ ISOBUS-enabled machines only; ⁵ PR, VR & XR only; ⁶ incl. Roller; ⁷ Momentum 16 & 24 only; ⁸ Gold rate for telehandler also available without Connect; ⁹ Gold rate only available in DE/FR/GB/IT/BG/CZ/EE/HR/HU/LT/LV/LV/MD/RO/RS/SE/SI/SK/UA/AT/LU/NL/CH/BE/BY/NO/PL/DK; ¹⁰ Platinum only available in DE, EN, FR; ¹¹ optional with Fendt Connect

Equipment variants and technical details.

Katana 650 Katana 850

Engine			
Manufacturer		MTU BR 1500	Liebherr D976
Emissions Stage 5		■	■
Engine horsepower (ECE R 120)	kW/hp	478/650	623/847
Cylinder	Number	R6	R6
Cubic capacity	litres	15,6	18,0
Exhaust gas after-treatment		SCR + DPF	SCR
AdBlue tank	litres	205	190
Fuel consumption measurement		■	■
Tank capacity configuration 1 – Diesel/AdBlue	litres	1.225/205	1.430/190
Tank capacity configuration 2 – Diesel/AdBlue/Additive	litres	1.010/205/215	1.215/190/215
Standard fan		■	■
Reversible fan		□	□
Cooler cage cleaning brush		□	□
Maximum load control		■	■

Ground drive

Hydrostatic drive		■	■
4WD hydrostatic		■	■
Speed field	km/h	0 - 20	0 - 20
Road speed (max. at 1,420 rpm)	km/h	0 - 40	0 - 40
Cruise control and maximum load control		■	■
40 km/h version		■	■
25 km/h version		□	□
20 km/h version		□	□
Steering drive axle hydraulic suspension		■	■
4WD as standard		■	
4WD with increased engine torque		□	■
BalancedGrip – smart-controlled AWD		□	□

Feed rollers

Rollers	Number	6	6
Hydrostatic drive		■	■
Stepless cutting length adjustable from cab		■	■
Distance from metal detector to cutterhead	mm	620	620
Metal detector		■	■
Foreign-body detection		□	□

Katana 650 Katana 850

Cutterhead

Shaft cutterhead continuous		■	■
Diameter	mm	720	720
Width	mm	800	800
Cutter	Number	2 x 14 (7)	2 x 14 (7)
Speed	rpm	1.150	1.150
Hydraulic drum brake		■	■
Chop length 14 knives	mm	7,4 - 41,4	7,4 - 41,4
Chop length 20 knives	mm	5,2 - 29,0	5,2 - 29,0
Chop length 28 knives	mm	3,7 - 20,7	3,7 - 20,7
Chop length 40 knives	mm	2,6 - 14,5	2,6 - 14,5
Cutterhead universal knives /20		□	□
Cutterhead universal knives /28		■	■
Cutterhead universal knives /40		□	□
Maize knife set /20		□	□
Maize knife set /28		□	□
Maize knife set /40		□	□
Shearbar maize		□	□
Shearbar Universal		□	□
Shearbar Universal HD		□	□
Manual shearbar adjustment		■	■
Wearing parts set standard		■	■
Wearing parts set HD		□	□

Kernel processing

R Cracker: roller cracker with sawtooth profile		■	■
RS Cracker: roller cracker with sawtooth profile and V helical groove		□	□
Diameter of rollers	mm	300	300
30% rotation speed difference		■	■
40% rotation speed difference		□	□

Discharge blower

Open rotor with upright v-shaped elements		■	■
Rotor diameter	mm	550	550
Rotor width	mm	620	620

Discharge chute

Pivot angle	Degrees	210	210
Overloading height	m	6,2	6,2
Discharge chute standard		■	■
Conical maize flap		□	□
Discharge chute extension		□	□

Katana 650 Katana 850

Cab

Comfort cab with all-round vision		■	■
Driving light front		■	■
Radio preparation		■	■
Electrically adjustable external rearview mirror and wide-angle mirror		■	■
Comfort seat, air sprung		■	■
Comfort seat, air sprung Evolution		□	□
Work lights standard		■	■
All work lights LED		□	□
Varioterminal 10.4" with touchscreen and key control		■	■
VarioDoc Basic		■	■
Output and yield measurement		□	□
Camera package		□	□
Emergency package		□	□
Radio DAB+		■	■
Side work lights		□	□
LED side work lights		□	□
Maintenance lighting LED		□	□
Cooling for storage box		□	□
Side wipers and windscreen washers		■	■
Radio system for discharge chute camera		□	□
2 additional coaxial speakers		□	□
Superimposed steering system and ready for automatic steering system		■	■
Guidance system steering key		□	□
FillControl		□	□

Track guidance

Track guidance basic package		□	□
Standard NovAtel		□	□

Katana 650 Katana 850

Contour Assistant		□	□
-------------------	--	---	---

Additional equipment			
Warning device up to vehicle width 3.00m		■	■
Warning device up to vehicle width 3.30m		□	□
Warning device up to vehicle width 3.50m		□	□
Fire extinguisher		□	□
Automatic hitch		□	□
Manual hitch		□	□
Compressed air system		■	■
Fuel tank diesel plus		■	■
Fuel tank diesel and water tank		□	□
Dosing system		□	□
Preparation for dosing system		□	□

Supplement

Protection cover for transport		□	□
Auxiliary valve da		□	□
Automatic ground-hugging		■	■
Fendt Katana toolbox		□	□

Front tyres

650/75R32 172A8 MT: AC70G ET 66	mm	3000	3000
710/70R42 173D TB: TM900 HP ET22	mm	3200	3200
800/70R38 173A8 MI: MACHXBIB ET -12	mm	3300	3300
900/60R38 172D MT: SFT ET -58	mm	3500	3500

Rear tyres

500/80R28 176A8 MT: SVT ET 185		■	■
600/70R34 160D TB: TM900 ET 130		□	□
620/70R30 166A8 MT: SFT ET 100		□	□
VF620/75R30 172D MI: AXIOBIB 2 ET 100		□	□
710/60R30 165A8 MT: SFT ET 31		□	□

Weights and dimensions

Unladen weight with cab without header	kg	16.200	17.500
Max. permissible overall weight	kg	18.500/24.000	18.500/25.000
Overall length without header	mm	7.182	7.182
Overall width without wheels	mm	2.955	2.955
Overall width with wheels	mm	2.995 - 3.499	2.995 - 3.499
Max. overall height	mm	3.989	3.989
Wheelbase	mm	3.450	3.450
Ground clearance with max. tyres	mm	450	450

FENDT

It's Fendt. Because we understand Agriculture.



www.fendt.com

AGCO GmbH – Fendt Marketing
87616 Marktoberdorf, Germany

 **AGCO**
Your Agriculture Company

Fendt is a worldwide brand of AGCO.
All details regarding scope of delivery, appearance, performance, dimensions and weights, fuel consumption and running costs of vehicles reflect the latest information available at the time of print. These may change by the time of purchase. Your Fendt dealer will be happy to inform you about any changes. The vehicles shown do not feature country-specific equipment.